

How to use mvMORPH?

Contents

1	Trees and Time series	2
1.1	Phylogenetic trees	2
1.2	Time series	3
2	Data and Errors	4
3	Simulating data	4
4	Optimization methods	5
5	Likelihood computation methods	5
6	Multivariate GLS models and High-Dimensional datasets	6
7	Model comparison	7
8	Treatment of the root	9
8.1	Ancestral state and primary optimum	9
8.2	Multiple phylogenetic means	10
8.3	Directional trends	11
9	Constraints	12
9.1	Overview of the various constraint parameterizations in mvMORPH	12
9.2	“User-defined” constraints	13
10	The “param” list	15
10.1	The “decomp” and “decompSigma” options	15
10.2	the “vcv” argument	18
11	Functions	19
11.1	The loglikelihood function	19
11.2	The matrix parameterization functions	20
12	Fossil data	20
12.1	Overview of the functions	20
12.2	Imputing missing values	21
12.3	Ancestral state reconstructions	21
13	Tweak mvMORPH	22
13.1	Make your own model!	22
13.2	Reuse of the returned log-likelihood functions	24
14	Bayesian mcmc	26

1 Trees and Time series

1.1 Phylogenetic trees

The trees used by the **mvMORPH** functions must be objects of class “phylo” as provided by the **ape** package. Such trees are directly used with the “EB”, “BM1”, and “OU1” models (and also with the SHIFT model if the shift age is given in the param list; see ?mvSHIFT). To fit models with multiple groups (or selective regimes) such as the “BMM” and “OUM” models (functions *mvBM* and *mvOU*), the evolutionary history of the selective regimes (i.e., the ancestral state reconstruction - see the next vignette) must be “painted” on the tree. For this purpose **mvMORPH** uses trees in SIMMAP format as provided by the **phytools** package. Several functions allows creating SIMMAP trees:

- *make.simmap* (Ancestral state reconstruction using stochastic mapping)
- *make.era.map* (Creates temporal map on the tree)
- *paintBranches* (Assigns a given discrete state to a particular branch)
- *paintSubTree* (Assigns a given discrete state to a particular sub-tree)

For instance, a users may be interested in directly using prior knowledge to specify different states on particular parts of the tree (or use results from other ancestral reconstructions methods). The user must refer to the **phytools** documentation for more details.

```
# Load the package and dependencies (ape, phytools, corpcor, subplex)
library(mvMORPH)

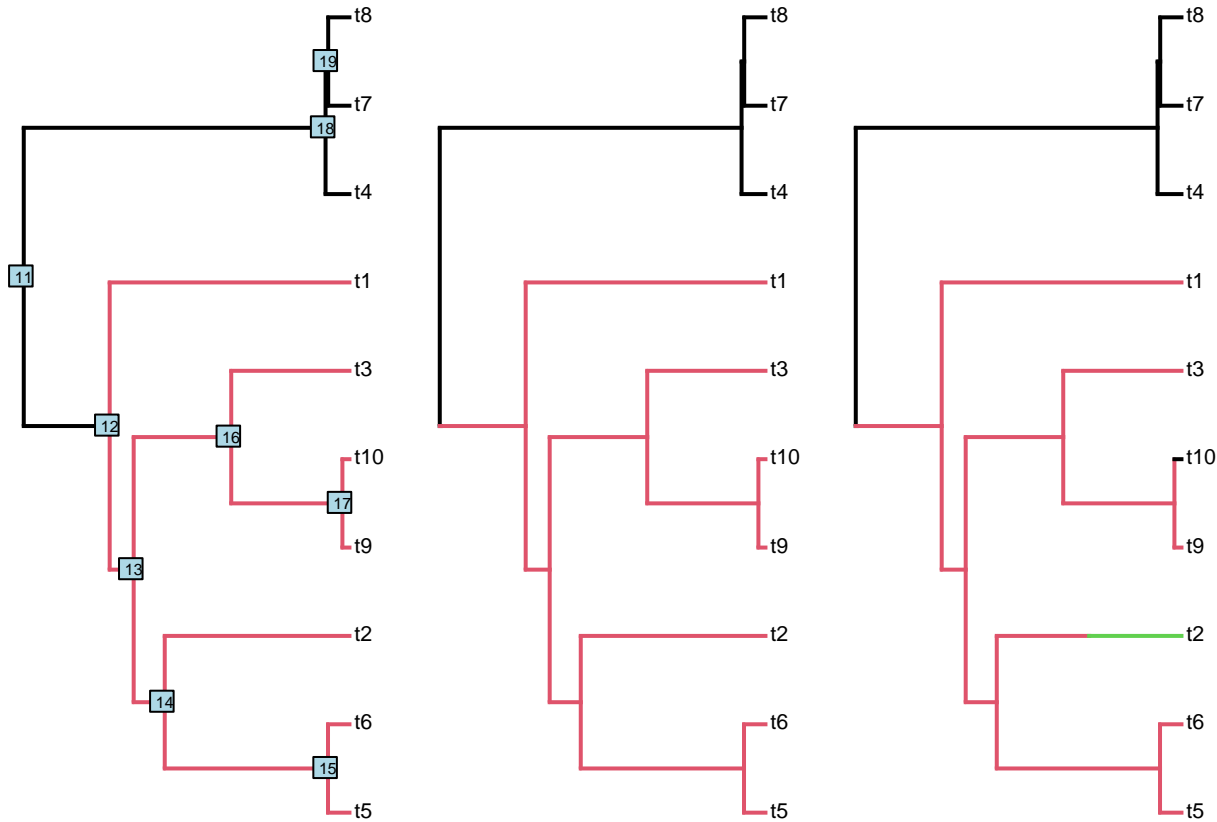
# Use a specified random number seed for reproducibility
set.seed(14)
par(mfrow=c(1,3))
tree <- pbtree(n=10)

# Set a different regime to the monophyletic group on node "12"
tree2 <- paintSubTree(tree, node=12, state="group_2", anc.state="group_1")
plot(tree2);nodelabels(,cex=0.8)

# We can set the character state to the stem branch leading to the subtree
tree3 <- paintSubTree(tree, node=12, state="group_2", anc.state="group_1", stem=TRUE)
plot(tree3)

# Finally we can also set a different regime to the branch leading to the tip "t10"
branch_1 <- match("t10",tree3$tip.label) # alternatively: which(tree3$tip.label=="t10")
tree4 <- paintBranches(tree3, branch_1, state="group_1")

# set also a change to a third state along the branch
# leading to "t2" using the "stem" argument
branch_2 <- match("t2",tree3$tip.label)
tree4 <- paintSubTree(tree4, branch_2, state="group_3", stem=0.5)
plot(tree4)
```



Note that the tree length can be scaled to unity using the `“scale.height = TRUE”` option. Why? Scaling the tree will not change the value of the maximum log-likelihood (or AIC), but will change the scale of the parameter estimates. This is particularly useful to compare analyses on different trees or to directly interpret estimates such as the phylogenetic half-life in % of the tree height (see `?half-life`). Besides, working on scaled trees can sometimes speed up the computations.

1.2 Time series

The `mvRWTS` and `mvOUTS` functions allow fitting multivariate models of continuous traits evolution with time-series data (such as ancestor-descendent fossil lineages). Such models can be used, for instance, to compare how traits evolve within an ancestor-descendent lineage or between lineages. The times-series must be provided as vectors of ordered ages relative to the starting point (i.e., the oldest, which should be “0”).

For instance:

```
# Make a tiny time-series object from fossil ages within [55; 32.5] Ma
fossil_ages <- c(55,46,43,38,35,32.5)

# The time-series becomes:
timeseries <- max(fossil_ages)-fossil_ages
timeseries
```

```
> [1] 0.0 9.0 12.0 17.0 20.0 22.5
```

The `“scale.height=TRUE”` option will scale the time series between 0 and 1 to provide the relative ages. Similarly to the analysis on phylogenetic trees, this changes the scale of the parameter estimates (such as sigma or alpha) but not the log-likelihood.

2 Data and Errors

Matrix or data frame must have species in rows and continuous traits (variables) in columns, rownames must match tip names. Missing cases are currently allowed as **NA** values with the “rpf”, “inverse”, and “pseudoinverse” methods. The measurement error or sampling variance is a matrix of similar size (note that the sampling variance is given by the square of the standard-errors of species mean estimates). Measurement error missing values (**NA** or “0”) are allowed.

For some time-series models (*mvOUTS* with fixed root vcv and *mvRWTS*; see the “param” list section below) the sampling variance for the first observations in the time-series must be provided otherwise an arbitrary value of 0.01 is set automatically to avoid singularity issues.

3 Simulating data

The *mvSIM* function can be used to simulate multivariate (and univariate) datasets.

```
set.seed(14)
# Generating a random tree with 50 species
tree<-pbtree(n=50)

# Setting the regime states of tip species
sta<-as.vector(c(rep("Forest",20),rep("Savannah",30))); names(sta)<-tree$tip.label

# Making the simmap tree with mapped states
tree<-make.simmap(tree, sta , model="ER", nsim=1)

# Number of simulated datasets
nsim<-1

# Rates matrices for the "Forest" and the "Savannah" regimes
# Note: use lists for multiple rates (matrices or scalars)
sigma<-list(Forest=matrix(c(2,0.5,0.5,1),2), Savannah=matrix(c(5,3,3,4),2))

# ancestral states for each traits
theta<-c(0,0)

# Simulate the "BMM" model
simul_1<-mvSIM(tree, nsim=nsim, model="BMM", param=list(sigma=sigma, theta=theta))

head(simul_1)
```

The *simulate* function directly generate datasets from estimated parameters of fitted models. This is useful for assessing uncertainty of estimated parameters through parametric bootstrap for instance.

```
# fit the BMM model on simulated data
fit <- mvBM(tree, simul_1)

# simulate 100 datasets from the fitted object
simul_2 <- simulate(fit, tree=tree, nsim=100)

# parametric bootstrap; e.g.:
bootstrap <- lapply(simul_2, function(x) mvBM(tree, x, echo=F, diagnostic=F))

# retrieve results; e.g. for the log-likelihood
```

```
log_distribution <- sapply(bootstrap, logLik)

hist(log_distribution, main="Log-likelihood distribution")
abline(v=fit$LogLik, lty=2, lwd=5, col="red")
```

See also the following sections examples.

4 Optimization methods

mvMORPH rely on the *optim* and *subplex* functions to optimize the log-likelihood of the models. The “L-BFGS-B” and “Nelder-Mead” algorithms are used by default for most models. The “L-BFGS-B” algorithm is generally faster and seems to be more efficient, but when the optimizer doesn’t converge or if the fit seems unreliable (i.e., when `$convergence` or the `$hess.value` in the results are not 0) it may help to switch between these methods or to change the options of these methods in the “control” argument (see `?optim` or `?subplex`). The *subplex* algorithm seems particularly efficient for the user-defined models. When the optimization is turned to “fixed” only the log-likelihood function is returned without evaluation (see 9.1 - log-likelihood function section).

5 Likelihood computation methods

mvMORPH uses various methods based on generalized least squares (GLS) or the pruning algorithm (contrasts) to compute the log-likelihood. While GLS-based approaches are very flexible and allow fitting almost all models, to deal with missing cases and measurement errors very easily, and are particularly safe for optimization (e.g., the “pseudoinverse” method), their naive implementations are computationally intensive (e.g., “inverse” and “pseudoinverse” methods). Two alternative and efficient algorithms also based on GLS are proposed (“rpf” and “sparse”). The “sparse” method is both efficient in terms of computational time and memory use, but is limited by the sparsity structure of the variance-covariance (vcv) matrix of the phylogenetic tree while the “rpf” is not. While these approaches are up to ten times faster than the “inverse” or “pseudoinverse” methods, they may suffer from singularity issues during optimization in some cases. The “pic” method is the fastest one (thousands of time faster than the GLS-based methods implemented here), but is currently available only for a couple of models and dichotomic trees.

The various methods for each model currently available on **mvMORPH** (stay tuned on [gitHub](#)) are presented in the table below (from the fastest to the slowest)

functions	<i>pic</i>	<i>sparse</i>	<i>univarpf</i>	<i>rpf</i>	<i>inverse</i>	<i>pseudoinv.</i>
<i>mvBM:BM1</i>	X	X	-	X	X	X
<i>mvBM:BMM</i>	U	X	-	X	X	X
<i>mvOU:OU1</i>	U	X	U	X	X	X
<i>mvOU:OUM</i>	-	X	U	X	X	X
<i>mvEB</i>	X	X	-	X	X	X
<i>mvSHIFT</i>	-	X	-	X	X	X
<i>mvOUTS</i>	-	-	-	X	X	X
<i>mvRWTS</i>	-	-	-	X	X	X
NA values	-	-	X	X	X	X
error	-	X	X	X	X	X

Notes: the “sparse” method can be used only with the “fixedRoot” vcv for the “OU1” and “OUM” models. This is because the “randomRoot” vcv is not sparse. This is also the case for the time-serie models. U = method currently implemented for the univariate case.

6 Multivariate GLS models and High-Dimensional datasets

The function *mvgl*s allows estimating multivariate linear models with a time-series or a phylogenetic structure by Generalized Least Squares (GLS). This is the multivariate counterpart to the *gls* function in **nlme** package and the *phylolm* function in **phylolm** when using *method*="LL". For the high-dimensional case (where the number of variables/traits *p* is approaching or is larger than the number of observations/species *n*) a regularization approach by penalized likelihood is used. Several penalties (option *penalty*: "RidgeArch", "RidgeAlt" and "LASSO") can be used to estimate the model parameters by maximizing a cross-validated log-likelihood (option *method*: "LOOCV", "H&L" and "Mahalanobis"). The default method is "LOOCV", the "H&L" and "Mahalanobis" are efficient and approximate methods that can be used to speed up the computations in very high-dimensional cases (but must be used for intercepts models only as their performances are decreasing with multiple predictors). Like for the *lm* function, the extractors functions *residuals*, *coef*, *fitted* and *vcov* can be used on objects of class 'mvgl's'.

```
set.seed(1)
n <- 32 # number of species
p <- 50 # number of traits (p>n)

tree <- pbtree(n=n, scale=1) # phylogenetic tree
R <- crossprod(matrix(runif(p*p), ncol=p)) # a random symmetric matrix (covariance)
# simulate a BM dataset
Y <- mvSIM(tree, model="BM1", nsim=1, param=list(sigma=R, theta=rep(0,p)))
data=list(Y=Y)

# High dimensional model fit
fit1 <- mvgl(s(Y~1, data=data, tree, model="BM", penalty="RidgeArch")
fit2 <- mvgl(s(Y~1, data=data, tree, model="OU", penalty="RidgeArch")
fit3 <- mvgl(s(Y~1, data=data, tree, model="EB", penalty="RidgeArch")

GIC(fit1); GIC(fit2); GIC(fit3) # BM have the lowest GIC value (see # Model comparison)
```

```
> -- Generalized Information Criterion --
> GIC: 4142.928 | Log-likelihood -1885.609
> -- Generalized Information Criterion --
> GIC: 4143.95 | Log-likelihood -1885.396
> -- Generalized Information Criterion --
> GIC: 4144.928 | Log-likelihood -1885.609
```

```
# We can also use the model fit to perform a phylogenetic PCA
# mvgl.s.pca(fit1)
```

```
# Regression model with Pagel's lambda estimation
data=list(Y=Y, X=rnorm(n))
mvgl(s(Y~X, data=data, tree, model="lambda", penalty="RidgeArch")
```

```
>
> Call:
> mvgl(formula = Y ~ X, data = data, tree = tree, model = "lambda",
>       penalty = "RidgeArch")
>
>
> Generalized least squares fit by penalized REML
> LOOCV of the log-restricted-likelihood: -2337.048
```

```

>
>
> Parameter estimate(s):
> lambda: 1
>
> Regularization parameter (gamma): 0.1978
>
>
> Covariance matrix of size: 50 by 50
> for 32 observations
>
> Coefficients (truncated):
>      [,1]  [,2]  [,3]  [,4]  [,5]  [,6]  [,7]  [,8]  [,9]
> (Intercept) 1.7269 1.10149 3.5545 1.0847 2.1988 1.63794 -1.05652 1.8867 0.1088
> X           0.2332 0.09391 0.1914 0.2891 0.3331 -0.07909 0.03068 0.1224 0.1308
>      [,10]
> (Intercept) 5.5730
> X          -0.1173
> Use "coef" to display all the coefficients

```

The function *mvols* can also be used for fitting a conventional multivariate regression (rather than GLS). The significance of the predictors in *mvglm* or *mvols* fit can be assessed using the function *manova.gls* (see the tutorial associated to Clavel & Morlon 2020 paper for further examples). Pairwise comparison for discrete predictors can be assessed using the *pairwise.glm* function.

Note: for the “RidgeArch” and “RidgeAlt” penalizations, various target matrices for the covariance matrix can be specified through the *target* argument (e.g. *target*=“unitVariance”, *target*=“Variance” or *target*=“null” (for RidgeAlt only)). The “Variance” target matrix and the LASSO penalty are not rotation-invariant (and should not be used with geometric morphometric data for instance). See also the *fit_t_pl* function in **RPANDA** package.

7 Model comparison

Models can be compared using Akaike criterions (AIC) and Akaike weights or likelihood ratio test (LRT) when they are nested. Several functions are available on **mvMORPH**: *LRT*, *AIC*, *logLik*, and *aicw*. For models estimated by penalized likelihood (function *mvglm*), a Generalized Information Criterion is computed using the function *GIC* (see above). Note this criterion has not been tested for comparing models with varying number of fixed effects.

```

set.seed(1)
tree <- pmtree(n=50)
# Simulate the traits
sigma<-matrix(c(0.1,0.05,0.05,0.1),2)
theta<-c(0,0)
data<-mvSIM(tree, param=list(sigma=sigma, theta=theta), model="BM1", nsim=1)

# Fit three nested models
fit_1 <- mvBM(tree, data, model="BM1")
fit_2 <- mvBM(tree, data, model="BM1", param=list(constraint="equal"))
fit_3 <- mvBM(tree, data, model="BM1", param=list(constraint="diagonal"))

# Compare their AIC values
AIC(fit_1); AIC(fit_2); AIC(fit_3)

```

```

> [1] 44.95452
> [1] 42.95779
> [1] 48.01843
# Likelihood Ratio Test:
LRT(fit_1, fit_2) # test non-significant as expected!

> -- Log-likelihood Ratio Test --
> Model BM1 versus BM1 equal variance/rates
> Number of degrees of freedom : 1
> LRT statistic: 0.003272743 p-value: 0.9543796
> ---
> Signif. codes:  0 '***' 0.001 '**' 0.01 '*' 0.05 '.' 0.1 ' ' 1

LRT(fit_1, fit_3)

> -- Log-likelihood Ratio Test --
> Model BM1 versus BM1 diagonal
> Number of degrees of freedom : 1
> LRT statistic: 5.063913 p-value: 0.02442902 *
> ---
> Signif. codes:  0 '***' 0.001 '**' 0.01 '*' 0.05 '.' 0.1 ' ' 1

# Compute the Akaike weights:
results <- list(fit_1,fit_2,fit_3)
weights <- aicw(results)
weights

> -- Akaike weights --
>
> Rank AIC diff      wi  AICw
> BM1 equal 2      1  43 0.00 1.0000 0.691
> BM1 default 1    2  45 2.00 0.3685 0.254
> BM1 diagonal 3   3  48 5.06 0.0796 0.055

# Model averaging of the evolutionary covariance
mdavg <- lapply(1:3, function(x) results[[x]]$sigma*weights$aicw[x])
Evol_cov <- Reduce('+',mdavg)
Evol_cov

>
> 0.09662155 0.02826968
> 0.02826968 0.09616274

# Is the model averaging better than the best fitting model in this example?
# which.min(c(mean((sigma-fit_2$sigma)^2),mean((sigma-Evol_cov)^2)))

# Get the evolutionary correlations:
cov2cor(Evol_cov)

>
> 1.0000000 0.2932787
> 0.2932787 1.0000000

# with more than 2 traits you can compute the conditional (or partial) correlations
cor2pcor(Evol_cov)

>
>      [,1]      [,2]
> [1,] 1.0000000 0.2932787

```



```
> [2,] 0.2932787 1.0000000
```

```
# Model averaging for the root state
mdavg <- lapply(1:3, function(x) results[[x]]$theta*weights$aicw[x])
Evol_theta <- Reduce('+',mdavg)
```

8 Treatment of the root

8.1 Ancestral state and primary optimum

The “root” argument in the “param” list of the *mvOU* function allows specifying if the root state and the optimum must be estimated (*root=TRUE*), unless we assume that the root state and the primary optimum are distributed according to the stationary distribution of the process (*root=FALSE*; Fig. 1). Indeed, the root state and the primary optimum are not identifiable separately on extant species. A slight variant of *root=FALSE* is *root=“stationary”* where the root state is explicitly dropped and we assume the optimum is stationary (e.g., the implementation used in the *OUwie* package).

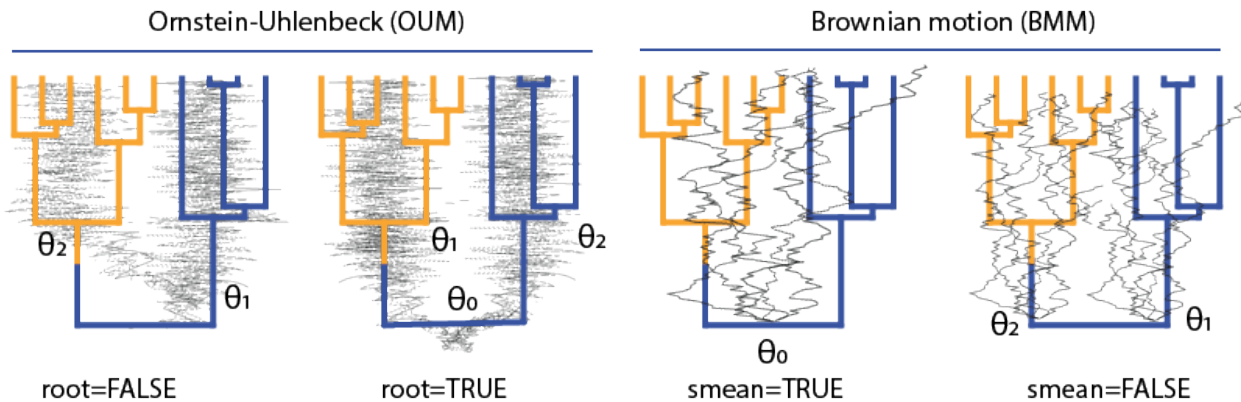


Fig. 1. Treatment of the root state options in the *mvOU* and *mvBM* functions. For the *OU* process, when *root=FALSE* the ancestral state at the root is directly derived from the oldest regime state (the ancestral state and the optimum are not estimated separately). With *root=TRUE* the ancestral state and the optimum are explicitly estimated. It should be noted that the *root=TRUE* option provides unreliable estimates without fossil data. For the *BM* model, the *smean=TRUE* option estimates a single ancestral state (the phylogenetic mean) while *smean=FALSE* estimates separates phylogenetic means

```
set.seed(100)
tree<-rtree(100)

# Simulate the traits
alpha<-matrix(c(0.2,0.05,0.05,0.1),2)
sigma<-matrix(c(0.1,0.05,0.05,0.1),2)
theta<-c(0,2,0,1.3)
data<-mvSIM(tree, param=list(sigma=sigma, alpha=alpha,
                             theta=theta, root=TRUE), model="OU1", nsim=1)

mvOU(tree, data, model="OU1", param=list(root=TRUE))
```

For the *mvOUTS* function, the path from the initial state to the optimum is explicitly estimated (*root=TRUE*, the default value), otherwise the ancestral (initial) state and the optimum are assumed to be the same (*root=FALSE*).

```

# timeseries
ts <- 0:49
sigma<-matrix(c(0.1,0.05,0.05,0.1),2)
alpha <- matrix(c(1,0.5,0.5,0.8),2,2)
theta<-c(0,2,0,1)
data<-mvSIM(ts, param=list(sigma=sigma, alpha=alpha,
                           theta=theta, root=TRUE), model="OUTS", nsim=1)

mvOUTS(ts, data, param=list(root=TRUE))
mvOUTS(ts, data, param=list(root=FALSE))

```

8.2 Multiple phylogenetic means

The “smean” argument in the “param” list of the *mvBM* function allows estimating either one ancestral state (smean=TRUE) for the whole tree (even if there are multiple regime states) or multiple ancestral states (one for each regimes; smean=FALSE). Note: contrary to the OU model, the reconstructed history of the discrete state doesn’t affect the model fit.

When differences between group/regime states are only related to the phylogenetic mean, a multiple rate model can be misleadingly preferred over a single rate model:

```

# BM model with two selective regimes
set.seed(1)
tree<-pbtree(n=50)

# Setting the regime states of tip species
sta<-as.vector(c(rep("Forest",20),rep("Savannah",30))); names(sta)<-tree$tip.label

# Making the simmap tree with mapped states
tree<-make.simmap(tree,sta , model="ER", nsim=1)

# Simulate the traits
sigma<-matrix(c(0.1,0.05,0.05,0.1),2)
theta<-c(0,2,0,2)
data<-mvSIM(tree, param=list(sigma=sigma, theta=theta, smean=FALSE), model="BM1", nsim=1)

# fit the models with and without multiple phylogenetic mean, and different rates matrix
fit_1 <- mvBM(tree, data, model="BM1")
fit_2 <- mvBM(tree, data, model="BMM")
fit_3 <- mvBM(tree, data, model="BM1", param=list(smean=FALSE))
fit_4 <- mvBM(tree, data, model="BMM", param=list(smean=FALSE))

```

Unless we consider the multiple mean models, the multiple rate matrix is misleadingly preferred ($\Delta AIC > 4$) over the single rate matrix (the generating) model.

```

# Compare the fitted models.
results <- list(fit_1,fit_2,fit_3,fit_4)
aicw(results, aicc=TRUE)

> -- Akaike weights --
>
> Rank AIC diff wi AICw
> BM1 default 3 1 43.6 0.00 1.00e+00 8.20e-01
> BMM default 4 2 46.6 3.03 2.20e-01 1.80e-01
> BMM default 2 3 67.3 23.72 7.07e-06 5.80e-06
> BM1 default 1 4 72.1 28.49 6.50e-07 5.33e-07

```

8.3 Directional trends

The “trend” argument in the “param” *list* allows estimating a BM model with a trend (in either *mvBM* or *mvRWTS*). It should be noted that with *mvBM*, a trend can be estimated reliably only on non-ultrametric trees.

```
# Simulated dataset
set.seed(1)
# Generating a random non-ultrametric tree
tree<-rtree(100)

# Simulate the traits
sigma<-matrix(c(0.1,0.05,0.05,0.1),2)
theta<-c(0,0)
trend<-c(0.2,0.2)
data<-mvSIM(tree, param=list(sigma=sigma, trend=trend, theta=theta,
                             names_traits=c("head.size","mouth.size")), model="BM1", nsim=1)

# model without trend
fit_1 <- mvBM(tree, data, param=list(trend=FALSE), model="BM1")
# model with independent trends
fit_2 <- mvBM(tree, data, param=list(trend=TRUE), model="BM1")
# model with similar trend for both traits
fit_3 <- mvBM(tree, data, param=list(trend=c(1,1)), model="BM1")

results <- list(fit_1,fit_2,fit_3)
aicw(results)
```

```
> -- Akaike weights --
>
> Rank AIC diff wi AICw
> BM1 default 3 1 114 0.000 1.00000 0.61471
> BM1 default 2 2 115 0.944 0.62375 0.38343
> BM1 default 1 3 125 11.600 0.00303 0.00186

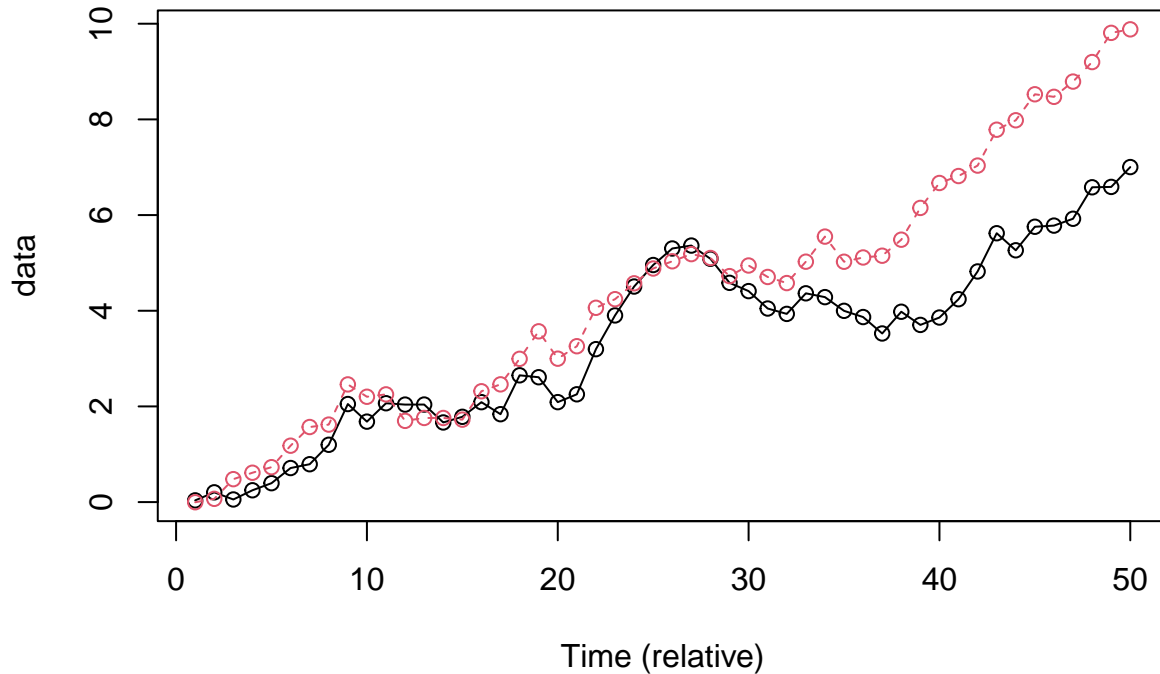
# are the differences between trends significant?
LRT(fit_2,fit_3) # No... as expected

> -- Log-likelihood Ratio Test --
> Model BM1 versus BM1
> Number of degrees of freedom : 1
> LRT statistic: 1.055977 p-value: 0.3041346
> ---
> Signif. codes: 0 '***' 0.001 '**' 0.01 '*' 0.05 '.' 0.1 ' ' 1
```

In the same way we can fit a directional random walk on time-series data.

```
# Simulate the time serie and data
timeseries <- 0:49
error <- matrix(0, nrow=50, ncol=2); error[1,] <- 0.001
data<-mvSIM(timeseries, error=error, model="RWTS",
            param=list(sigma=sigma, theta=theta, trend=trend), nsim=1)

# plot the time serie
matplot(data, type="o", pch=1, xlab="Time (relative)")
```



```
# model fit
fit1 <- mvRWTS(timeseries , data, error)
fit2 <- mvRWTS(timeseries , data, error, param=list(trend=c(1,1)))
```

```
LRT(fit2,fit1)
```

```
> -- Log-likelihood Ratio Test --
> Model RWTS versus RWTS
> Number of degrees of freedom : 1
> LRT statistic: 13.65591 p-value: 0.0002195495 ***
> ---
> Signif. codes:  0 '***' 0.001 '**' 0.01 '*' 0.05 '.' 0.1 ' ' 1
```

Note that the theta parameters cannot be estimated analytically for the “trend” model (i.e., option `root.mle=TRUE` in the returned log-likelihood function)

9 Constraints

9.1 Overview of the various constraint parameterizations in mvMORPH

Comparison of constrained models allows testing various evolutionary hypotheses such as independent evolution, comparing evolutionary rates between traits, common structure, phenotypic integration, ... etc. The constraint methods currently available on mvMORPH are the following (see also Fig. 2):

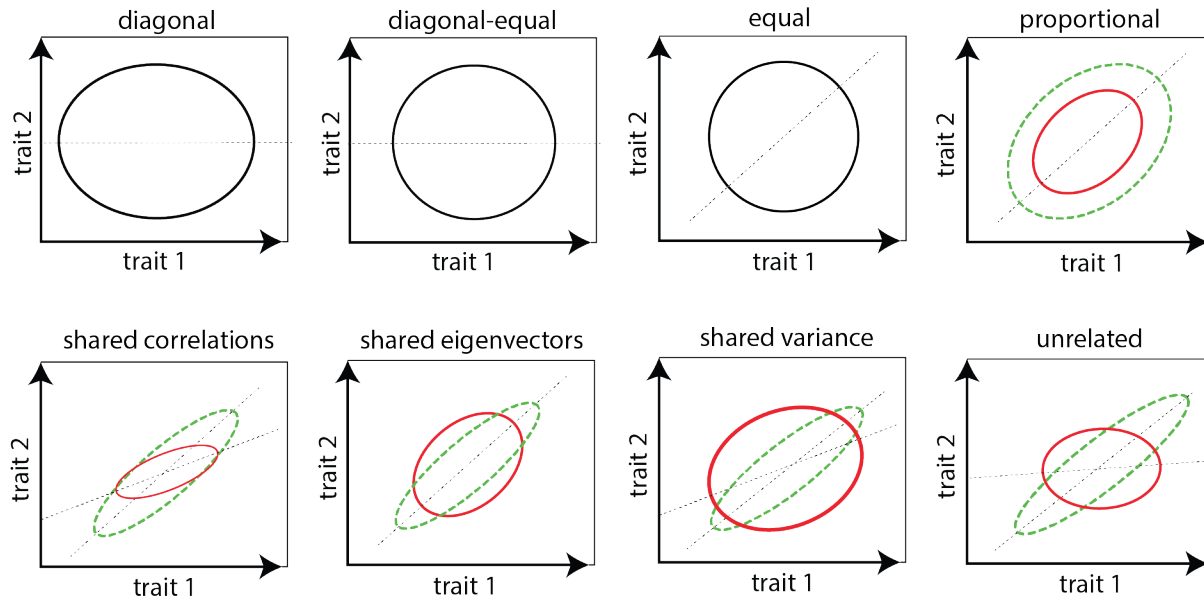


Fig. 2. Bivariate representation of the covariance constraints used in *mvMORPH*.

- “**default**”: no constraint imposed on the structure of the rate (evolutionary variance and covariance) matrix
- “**diagonal**”: there are no evolutionary covariance between traits → the rate matrix is diagonal.
- “**equaldiagonal**”: there are no evolutionary covariance and the traits share the same variance.
- “**equal**”: the traits covaries and share the same variance (or evolutionary rate).
- “**proportional**” (only with “BMM”): the rate matrices are proportional for different regimes/states mapped on the tree.
- “**correlation**” (only with “BMM”): the rate matrices share the same correlations between traits for different regimes/states mapped on the tree.
- “**variance**” (only with “BMM”): the rate matrices share the same variances (rates) between regimes/states mapped on the tree.
- “**shared**” (only with “BMM”): the rate matrices share the same eigen-vectors (orientations) between regimes/states mapped on the tree.
- “**user**”: the design of the rate matrix is directly defined by the user. Note that for 2 traits, all the combinations are readily available from the default methods. See example below.

9.2 “User-defined” constraints

User-defined constraints are done by providing a symmetric square matrix with integer values taken as indices of the parameters. To constrain covariance values to zero, the user must use **NA** values as indices. Because a covariance matrix must be symmetric positive definite, negative eigenvalues are automatically shrunk to a specified tolerance value ($=1$). This value can be changed through the “param” *list* with the “tol” argument. This value must be changed with various estimates (e.g. $1e-5$, $10\dots$) if convergence of the optimizer has not been achieved. The alternative optimization methods may help. **The “subplex” optimization method is advised.**

```
set.seed(14)
# Generating a random tree
tree<-pbtrees(n=50)

# Simulate 3 traits
sigma <- matrix(c(0.01,0.005,0.003,0.005,0.01,0.003,0.003,0.003,0.01),3)
theta<-c(0,0,0)
```

```
data<-mvSIM(tree, model="BM1", nsim=1, param=list(sigma=sigma, theta=theta))
```

```
# Fit user-defined constrained model
```

```
user_const <- matrix(c(1,4,4,4,2,5,4,5,3),3)
```

```
fit1 <- mvBM(tree, data, model="BM1", method="pic"  
            , param=list(constraint=user_const), optimization="subplex")
```

```
# only rates/variances are changing
```

```
user_const <- matrix(c(1,3,3,3,2,3,3,3,2),3)
```

```
fit2 <- mvBM(tree, data, model="BM1", param=list(constraint=user_const)  
            , method="pic", optimization="subplex")
```

```
# Some covariances constrained to zero
```

```
user_const <- matrix(c(1,4,4,4,2,NA,4,NA,3),3)
```

```
print(user_const)
```

```
>      [,1] [,2] [,3]  
> [1,]    1    4    4  
> [2,]    4    2   NA  
> [3,]    4   NA    3
```

```
fit3 <- mvBM(tree, data, model="BM1", method="pic"  
            , param=list(constraint=user_const), optimization="subplex")
```

```
> Efficient parameterization is not yet implemented for user-defined constraints  
> Please check the results carefully!!
```

```
> successful convergence of the optimizer
```

```
> a reliable solution has been reached
```

```
>
```

```
> -- Summary results for user-defined BM1 constrained model --
```

```
> LogLikelihood:    163.4535
```

```
> AIC:    -312.907
```

```
> AICc:    -312.1183
```

```
> 7 parameters
```

```
>
```

```
> Estimated rate matrix
```

```
> -----
```

```
>
```

```
> 0.008666919 0.002160788 0.002160788
```

```
> 0.002160788 0.007599502 0.000000000
```

```
> 0.002160788 0.000000000 0.008832866
```

```
>
```

```
> Estimated root state
```

```
> -----
```

```
>
```

```
> theta: 0.01480659 -0.1104121 0.0512424
```

Note: the user-defined option can also be used with the *decomp* or *decompSigma* argument for the OU processes (see below). The diagonal elements are automatically squared to obtain positive definite matrices or positive eigenvalues.

10 The “param” list

The “param” *list* argument allows specifying multiple options in **mvMORPH** functions (starting value estimate for the optimization, constraints, matrix parameterization. . .)

10.1 The “decomp” and “decompSigma” options

These options allow specifying the matrix parameterization used for the alpha (A) and dispersion (R) ($R = \Sigma^T \Sigma$) matrices of parameters for the Ornstein-Uhlenbeck process:

$$dX(t) = A(\theta(t) - X(t))dt + \Sigma dW(t)$$

and Brownian motion:

$$dX(t) = \Sigma dW(t)$$

For symmetric matrices (e.g., the variance-covariance matrix of the multivariate Brownian motion $R = \Sigma^T \Sigma$), **mvMORPH** uses various parameterizations to ensure the positive definiteness such as *decomp*=“*cholesky*”, *decomp*=“*spherical*” or *decomp*=“*eigen+*”. The *decomp*=“*eigen*” option parameterizes a symmetric matrix. For the *mvOU* function, the sigma matrix parameterization is controlled by the *decompSigma* argument; e.g., *decompSigma*=“*cholesky*”.

Symmetric matrices are parameterized by $p(p+1)/2$ parameters. The first $p(p-1)/2$ parameters are used to compute the cholesky factors of spherical angles, or the orthogonal matrices; the next p parameters are the eigenvalues (in “eigen”) or the standard deviations (in “spherical”). The bivariate case is illustrated here:

Cholesky decomposition: *decomp*=“*cholesky*”

$$R/A = \begin{bmatrix} l_{11} & 0 \\ l_{21} & l_{22} \end{bmatrix} \begin{bmatrix} l_{11} & 0 \\ l_{21} & l_{22} \end{bmatrix}^T$$

Separation strategy: *decomp*=“*spherical*”

$$R/A = \begin{bmatrix} \sqrt{\nu_1} & 0 \\ 0 & \sqrt{\nu_2} \end{bmatrix} \left(\begin{bmatrix} 1 & \cos(\theta_1) \\ 0 & \sin(\theta_1) \end{bmatrix}^T \begin{bmatrix} 1 & \cos(\theta_1) \\ 0 & \sin(\theta_1) \end{bmatrix} \right) \begin{bmatrix} \sqrt{\nu_1} & 0 \\ 0 & \sqrt{\nu_2} \end{bmatrix}$$

Eigen decomposition: *decomp*=“*eigen*”

$$R/A = \begin{bmatrix} \cos(\theta_1) & -\sin(\theta_1) \\ \sin(\theta_1) & \cos(\theta_1) \end{bmatrix} \begin{bmatrix} \lambda_1 & 0 \\ 0 & \lambda_2 \end{bmatrix} \begin{bmatrix} \cos(\theta_1) & -\sin(\theta_1) \\ \sin(\theta_1) & \cos(\theta_1) \end{bmatrix}^T$$

or to force the eigenvalues to be positive (mandatory for the sigma matrix):

$$R/A = \begin{bmatrix} \cos(\theta_1) & -\sin(\theta_1) \\ \sin(\theta_1) & \cos(\theta_1) \end{bmatrix} \begin{bmatrix} \log(\lambda_1) & 0 \\ 0 & \log(\lambda_2) \end{bmatrix} \begin{bmatrix} \cos(\theta_1) & -\sin(\theta_1) \\ \sin(\theta_1) & \cos(\theta_1) \end{bmatrix}^T$$

For the OU process, the alpha matrix can be more general. Matrix parameterization such as singular value decomposition (*decomp*=“*svd*”), QR (*decomp*=“*qr*”), or Schur decomposition (*decomp*=“*schur*”) are nevertheless used to generate decomposable and real matrices. The *decomp*=“*svd+*”, *decomp*=“*qr+*”, and *decomp*=“*schur+*” options forces the eigenvalues to be positive by taking their logarithm, and ensure uniqueness for the QR factorization. These matrices are parameterized by p^2 parameters. The first $p(p-1)/2$ parameters are used to compute the first orthogonal matrix, while the next p parameters are used for the eigenvalues (“svd”) or diagonal values of the upper triangular matrix (“qr” and “schur”). The last $p(p-1)/2$ parameters are used to compute the second orthogonal matrix (“svd”), or to fill the upper off-diagonal of the triangular matrix in the “schur” and “qr” parameterizations.

Singular Value Decomposition (SVD): *decomp*="svd"

$$A = \begin{bmatrix} \cos(\theta_1) & -\sin(\theta_1) \\ \sin(\theta_1) & \cos(\theta_1) \end{bmatrix} \begin{bmatrix} \lambda_1 & 0 \\ 0 & \lambda_2 \end{bmatrix} \begin{bmatrix} \cos(\theta_2) & -\sin(\theta_2) \\ \sin(\theta_2) & \cos(\theta_2) \end{bmatrix}^T$$

QR decomposition: *decomp*="qr"

$$A = \begin{bmatrix} \cos(\theta_1) & -\sin(\theta_1) \\ \sin(\theta_1) & \cos(\theta_1) \end{bmatrix} \begin{bmatrix} \lambda_1 & \theta_2 \\ 0 & \lambda_2 \end{bmatrix}$$

Schur decomposition: *decomp*="Schur"

$$A = \begin{bmatrix} \cos(\theta_1) & -\sin(\theta_1) \\ \sin(\theta_1) & \cos(\theta_1) \end{bmatrix} \begin{bmatrix} \lambda_1 & \theta_2 \\ 0 & \lambda_2 \end{bmatrix} \begin{bmatrix} \cos(\theta_1) & -\sin(\theta_1) \\ \sin(\theta_1) & \cos(\theta_1) \end{bmatrix}^T$$

Finally, the alpha matrix can be diagonal (independent effects) or triangular. Triangular parameterizations are for instance used on time-series forecasting to determine if a given variable is helpful in predicting a second one (the so-called Granger causality; e.g., the lower process drives the upper one for an upper triangular matrix). Similarly to symmetric matrices, upper and lower triangular matrices are parameterized by $p(p+1)/2$ parameters. The first $p(p-1)/2$ parameters are used for the upper or lower off-diagonal of the matrices, while the next p parameters are in the diagonal.

Diagonal: *decomp*="diagonal"

$$R/A = \begin{bmatrix} \sqrt{d_{11}} & 0 \\ 0 & \sqrt{d_{22}} \end{bmatrix} \begin{bmatrix} \sqrt{d_{11}} & 0 \\ 0 & \sqrt{d_{22}} \end{bmatrix}^T$$

Upper triangular: *decomp*="upper"

$$A = \begin{bmatrix} \log(d_{11}) & u_{12} \\ 0 & \log(d_{22}) \end{bmatrix}$$

Lower triangular: *decomp*="lower"

$$A = \begin{bmatrix} \log(d_{11}) & 0 \\ l_{21} & \log(d_{22}) \end{bmatrix}$$

Note: so far, the package can't handle matrices with similar eigenvalues (e.g., the diagonal values must be slightly different in a triangular matrix).

Non-symmetric matrices can be used to test, for example, hypotheses of evolutionary lag (see chunk of code below). That is, one trait is chasing the optimum of the second one with a sufficient lag to be detected (a triangular matrix), while if the tracking is fast enough a "symmetric" model will be preferred. It should be noted that on ultrametric trees it's difficult to estimate accurately the path from the ancestral state toward the primary optimum and therefore it's hard to test such kind of process with the "OU1" model. For the "OUM" model on ultrametric trees, the path from the first optimum to the other one between traits is compared, which makes the model identifiable.

```
set.seed(14)
tree <- rtree(50)
alpha<-matrix(c(0.6,0,-0.6,0.3),2)
sigma<-matrix(c(0.01,0.005,0.005,0.01),2)
theta <- matrix(c(0,1,0,1.3),2)
# Simulate two correlated traits evolving along the phylogeny
# e.g. brain size is lagging behind body-size
```



```

# as in Deaner & Nunn 1999 - PRSB
data<-mvSIM(tree,nsim=1, model="OU1",
            param=list(sigma=sigma, alpha=alpha, theta=theta, root=TRUE,
                      names_traits=c("brain-size","body-size")))

# No detectable lag:
fit_1 <- mvOU(tree, data, model="OU1", param=list(root=TRUE))
# Brain size lag behind body size (the simulated model!)
fit_2 <- mvOU(tree, data, model="OU1", param=list(decomp="upper", root=TRUE))
# Body size lag behind brain-size
fit_3 <- mvOU(tree, data, model="OU1", param=list(decomp="lower", root=TRUE))

results <- list(fit_1, fit_2, fit_3)
aicw(results)

```

```

> -- Akaike weights --
>      Rank  AIC diff      wi  AICw
> OU1 2     1 -216 0.00 1.0000 0.9452
> OU1 3     2 -209 6.50 0.0388 0.0367
> OU1 1     3 -208 7.91 0.0191 0.0181

```

User-defined constraints on the matrix parameterizations are allowed (but user should check convergence and try with different methods; see the “constraints” section above):

```

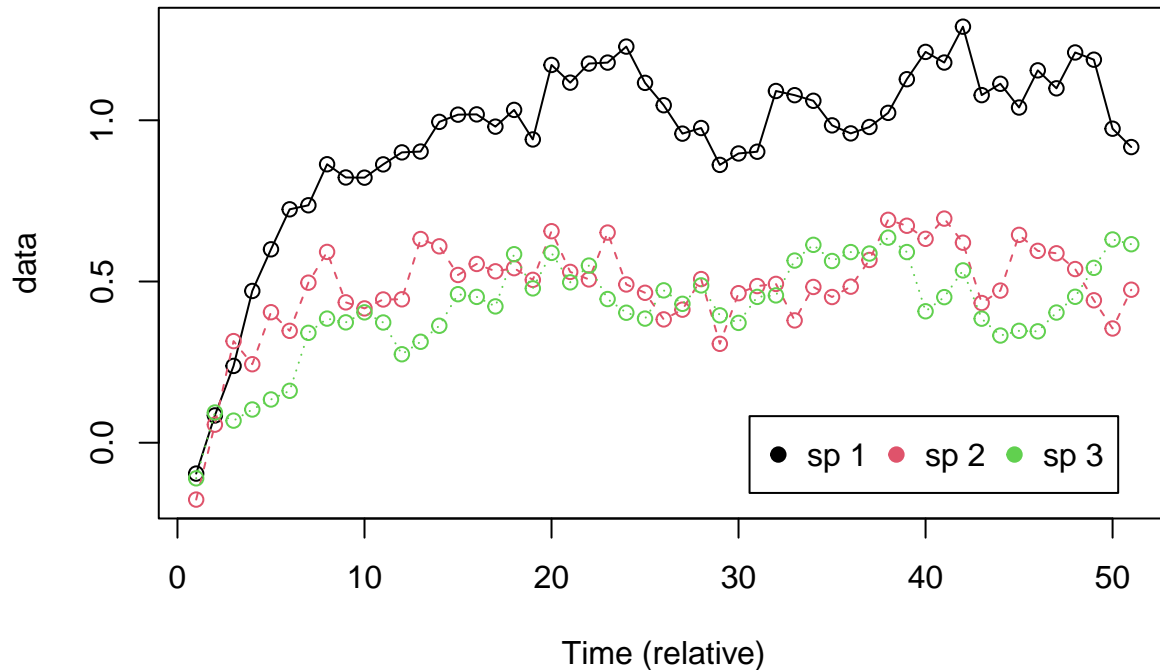
# try user defined constraints
set.seed(100)
ts <- 50
timeseries <- 0:ts

sigma <- matrix(c(0.01,0.005,0.003,0.005,0.01,0.003,0.003,0.003,0.01),3)
# upper triangular matrix with effect of trait 2 on trait 1.
alpha <- matrix(c(0.4,0,0,-0.5,0.3,0,0,0,0.2),3,3)
theta <- matrix(c(0,0,0,1,0.5,0.5),byrow=T, ncol=3); root=TRUE

data <- mvSIM(timeseries , model="OUTS", param=list(alpha=alpha,
          sigma=sigma, theta=theta, root=root,
          names_traits=c("sp 1", "sp 2", "sp 3")))

# plot
matplot(data, type="o", pch=1, xlab="Time (relative)")
legend("bottomright", inset=.05, legend=colnames(data), pch=19, col=c(1,2,3), horiz=TRUE)

```



Then provide a matrix of integer indices specifying the target structure:

```
# define an user constrained drift matrix
indice <- matrix(NA,3,3)
diag(indice) <- c(1,2,3)
indice[1,2] <- 4

# fit the models
fit_1 <- mvOUTS(timeseries , data, param=list(vcv="fixedRoot", decomp=indice))
fit_2 <- mvOUTS(timeseries , data, param=list(vcv="fixedRoot", decomp="diagonal"))

LRT(fit_1, fit_2)
```

10.2 the “vcv” argument

For the Ornstein-Uhlenbeck process (OU), the variance-covariance matrix (vcv) is conditioned depending on how the root is treated. The *vcv* = “*randomRoot*” option assumes that the root is a random variable with the distribution of the stationary process; the *vcv* = “*fixedRoot*” option assumes that the root state is a fixed parameter. While the computation of the “*randomRoot*” variance-covariance is faster, we cannot use it with the *method* = “*sparse*” option to compute the log-likelihood. However when the process is stationary (i.e., when the alpha value/eigenvalues are large enough) both approaches should converge to the same results:

```
set.seed(1)
# simulate a tree scaled to unit length
tree <- pbtree(n=100, scale=1)

theta <- c(0,2) # the ancestral state and the optimum
sigma <- 1
alpha <- 0.1 # large half-life
trait <- mvSIM(tree, nsim=1, model="OU1",
               param=list(theta=theta, sigma=sigma, alpha=alpha, root=TRUE))
```

```

# fit the models
fit_1 <- mvOU(tree, trait, model="OU1", param=list(vcv="randomRoot"))
fit_2 <- mvOU(tree, trait, model="OU1", param=list(vcv="fixedRoot"))

# Simulate with a stronger effect
alpha <- 6 # small half-life ~10% of the tree height
trait <- mvSIM(tree, nsim=1, model="OU1",
               param=list(theta=theta, sigma=sigma, alpha=alpha, root=TRUE))

# fit the models
fit_3 <- mvOU(tree, trait, model="OU1", param=list(vcv="randomRoot"))
fit_4 <- mvOU(tree, trait, model="OU1", param=list(vcv="fixedRoot"))

# compare the log-likelihood
abs(logLik(fit_1))-abs(logLik(fit_2)) # large half-life

> [1] 0.4415878

abs(logLik(fit_3))-abs(logLik(fit_4)) # small half-life

> [1] -0.01066365

```

Note: when the strength of selection is high the theta/alpha estimates may be aberrant when using the “fixedRoot” option, particularly on ultrametric trees.

11 Functions

11.1 The loglikelihood function

The log-likelihood function evaluated during the model fit can be accessed on objects of class “mvmorph” with the `$llik()` expression.

```

set.seed(1)
tree <- pbtree(n=50)
# Simulate the traits
sigma<-matrix(c(0.1,0.05,0.05,0.1),2)
theta<-c(0,0)
data<-mvSIM(tree, param=list(sigma=sigma, theta=theta), model="BM1", nsim=1)

# Fit the model
fit <- mvBM(tree, data, model="BM1")

# the loglik function (the order of parameter is printed:)
fit$llik

# Use the maximum likelihood parameters from the optimizer
par <- fit$param$opt$par
fit$llik(par)

> [1] -17.47726

all.equal(fit$llik(par),logLik(fit)) # similar results

> [1] TRUE

```

```
# Return also the analytic MLE for theta
fit$llik(par, theta=TRUE)
```

```
> $logl
> [1] -17.47726
>
> $theta
> [1] -0.06805689 -0.50171028
```

On all **mvMORPH** models, the ancestral states (optimum or theta) are the maximum likelihood estimate (mle) analytic solutions (conditioned on the other parameters). Nevertheless, the user can specify manually the values for the root state (e.g., for mcmc evaluation):

```
# Use the maximum likelihood parameters from the optimizer
fit$llik(c(par,fit$theta), root.mle=FALSE)
```

```
> [1] -17.47726
```

11.2 The matrix parameterization functions

The model object also returns functions in the “param” *list*. The *sigmafun* and *alphafun* functions return the parameterization functions used to fit the models (see the “parameterization” section).

```
# Reconstruct sigma with the untransformed values of the optimizer
sigma <- fit$param$sigmafun(par)
```

```
all.equal(as.vector(sigma), as.vector(fit$sigma))
```

```
> [1] TRUE
```

Note that all these functions are available without maximum likelihood evaluation by using the “fixed” optimization option.

```
# Return the log-likelihood function only
fit <- mvBM(tree, data, model="BM1", optimization="fixed")
```

```
> No optimization performed, only the Log-likelihood function is returned with default parameters.
```

12 Fossil data

All the functions in **mvMORPH** can handle datasets with fossil species, either from time-series or phylogenetic trees. Fossil data added to extant ones in non-ultrametric trees frequently greatly improve the reliability and accuracy of parameter estimates and are mandatory for detecting changes in evolutionary modes such as with the *mvSHIFT* model or with *mvBM* and *mvRWTS* with “trend”. See also “treatment of the root state” above.

12.1 Overview of the functions

Methods specifically dedicated to work with fossil data:

- *mvSHIFT* models
- *mvBM* param=list(trend=TRUE)
- *mvOU* param=list(root=TRUE)
- *mvOUTS* multivariate OU for time-series (coevolution, causal links...)

- *mvRWTS* multivariate random walk (=BM process) for time series
- *mvRWTS* param=list(trend=TRUE) directional random walk

12.2 Imputing missing values

Fossil remains are often altered by post-mortem taphonomic processes such as weathering or distortion. The *estim* function can be used to estimate missing phenotypic values for incomplete fossil specimens according to an evolutionary model.

```
# Simulated dataset
set.seed(14)
# Generating a random tree
tree<-rtree(50)

# Simulate two correlated traits evolving along the phylogeny
sigma<-matrix(c(0.1,0.05,0.05,0.1),2); theta<-c(0,2)
traits<-mvSIM(tree, model="BM1", param=list(sigma=sigma, theta=theta))

# Introduce some missing cases (NA values)
data<-traits
data[8,2]<-NA
data[25,1]<-NA

# Fit of model 1
fit_1<-mvBM(tree,data,model="BM1")

# Estimate the missing cases
imp<-estim(tree, data, fit_1, asr=FALSE)

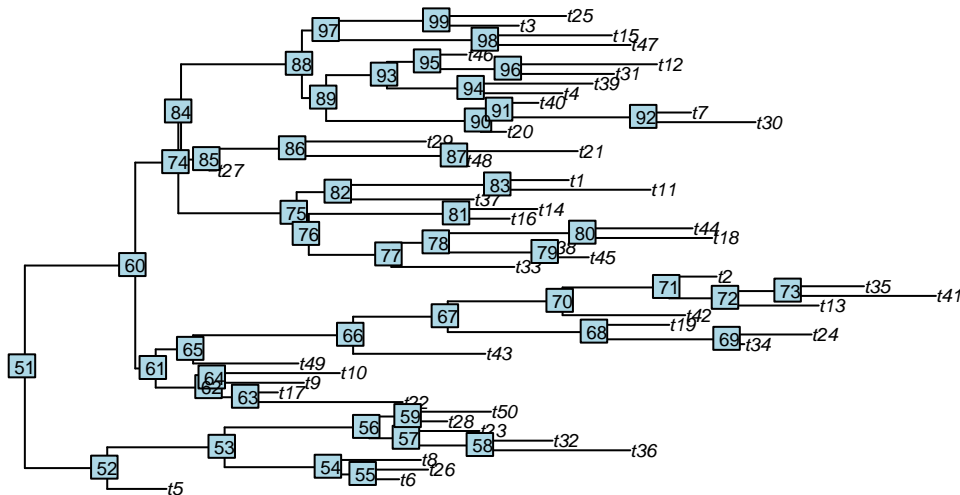
# Check the imputed data
imp$estim[1:10,]
```

```
>           [,1]      [,2]
> t5  -0.6786515  1.694069
> t6  -0.5199128  2.681879
> t26 -0.6250005  2.630684
> t8   -0.7604932  2.741597
> t36 -1.6387992  2.278030
> t32 -1.2949566  2.631705
> t23 -0.5439427  2.466073
> t28 -0.7203421  2.295284
> t50 -0.7281317  2.163822
> t22 -0.2363978  1.214542
```

12.3 Ancestral state reconstructions

Note that if the *asr* argument is TRUE, the ancestral states at each node are returned instead of the imputed values. If there is missing cases in the dataset, they are first imputed before estimating the ancestral values.

```
plot(tree, cex=0.6)
nodeLabels(, cex=0.6)
```



```
# Estimate the ancestral states
asr<-estim(tree, data, fit_1, asr=TRUE)
```

> Warning in estim(tree, data, fit_1, asr = TRUE): Missing cases were first imputed before estimating the ancestral values!!

```
asr$estim[1:10,]
```

```
>      [,1]      [,2]
> 51 -0.4808148  1.848187
> 52 -0.6113839  1.876056
> 53 -0.6643540  2.275969
> 54 -0.6424807  2.590755
> 55 -0.5897833  2.635715
> 56 -0.7593304  2.339656
> 57 -0.8071625  2.408130
> 58 -1.1718089  2.475170
> 59 -0.7366468  2.286504
> 60 -0.3058156  1.810833
```

13 Tweak mvMORPH

We can use the returned log-likelihood of the mvMORPH functions, or the *mvLL* function to fit user-defined models. Here we show two simple examples of how the architecture of the package can be used.

13.1 Make your own model!

```
set.seed(123)
# Here I show a simple example of model fitting using mvMORPH
tree <- pbtree(n=100)

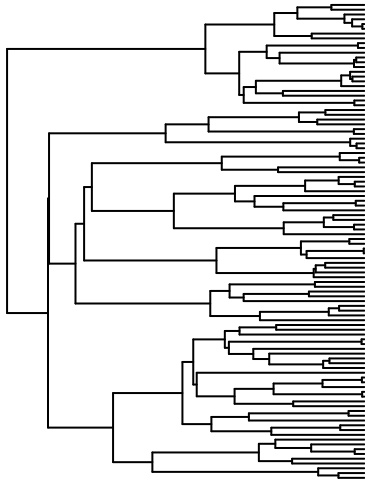
# 1) Create a model, e.g. the Kappa model of Pagel 1999
phylo_kappa <- function(tree, kappa){
  tree$edge.length <- tree$edge.length ^ kappa
  return(tree)
}
```

```

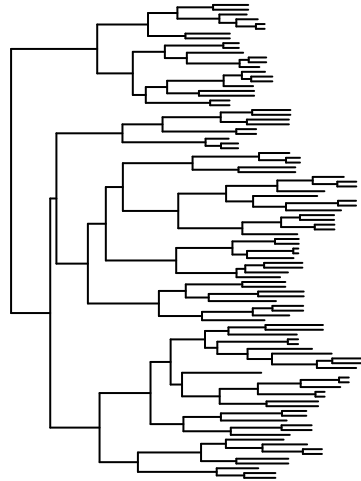
# just to compare the trees
par(mfrow=c(1,2))
plot(tree, show.tip.label=FALSE, main="untransformed tree")
plot(phylo_kappa(tree, 0.5), show.tip.label=FALSE, main="Kappa model")

```

untransformed tree



Kappa model



```

# 2) Create the log-likelihood function

```

```

log_lik <- function(par, tree, data){
  tree_transf <- phylo_kappa(tree, par)
  result <- mvLL(tree_transf, data, method="pic")
  return(list(logl=result$logl, theta=result$theta, sigma=result$sigma))
}

```

```

# 3) optimize it!

```

```

# create fake data

```

```

trait <- rTraitCont(phylo_kappa(tree, 0.7))

```

```

# guess for the optimization

```

```

guess_value <- 0.5

```

```

# optimize the model!

```

```

fit <- optim(guess_value, function(par){log_lik(par, tree, trait)$logl},
            method="L-BFGS-B", lower=0, upper=1, control=list(fnscale=-1))

```

```

result <- data.frame(logLik=fit$value, kappa=fit$par, sigma2=log_lik(fit$par, tree,
                        trait)$sigma, theta=log_lik(fit$par, tree, trait)$theta )

```

```

rownames(result) <- "Model fit"

```

```

# print the result

```

```

print(result)

```

```

>           logLik      kappa      sigma2      theta
> Model fit 91.51378 0.493005 0.006776875 -0.06029173

```

```

# Do the same for a multivariate model:
# simulate traits independently
trait <- cbind( rTraitCont(phylo_kappa(tree, 0.7)), rTraitCont(phylo_kappa(tree, 0.7)))

log_lik <- function(par, tree, data){
  # transform the tree for each traits
  tree_transf <- list(phylo_kappa(tree, par[1]), phylo_kappa(tree, par[2]))
  result <- mvLL(tree_transf, data, method="pic")
  return(list(logl=result$logl, theta=result$theta, sigma=result$sigma))
}

# fit
guess_value <- c(0.5,0.5)
fit <- optim(guess_value, function(par){log_lik(par, tree, trait)$logl},
            method="L-BFGS-B", lower=0, upper=1, control=list(fnscale=-1))

result <- list(logLik=fit$value, kappa=fit$par, sigma2=log_lik(fit$par, tree,
                    trait)$sigma, theta=log_lik(fit$par, tree, trait)$theta)
# as expected the covariances are low
print(result)

> $logLik
> [1] 161.602
>
> $kappa
> [1] 0.8067459 0.6786095
>
> $sigma2
>           [,1]      [,2]
> [1,] 0.0106994205 0.0003400595
> [2,] 0.0003400595 0.0115382264
>
> $theta
> [1] 0.177825022 -0.003083168

```

13.2 Reuse of the returned log-likelihood functions

We can also use the likelihood returned by the mvMORPH functions to fit custom models using joint optimizations. Here is an example with time-series data to fit a shift in rates and covariances.

```

set.seed(123)
# Simulate the time serie
timeseries <- 0:99

# Simulate the traits
sigma_1 <- matrix(c(0.015,0.005,0.005,0.01),2)
sigma_2 <- matrix(c(0.03,0.01,0.01,0.02),2)
theta <- c(0.5,1)
error <- matrix(0,ncol=2,nrow=100);error[1,]=0.001
data_1<-mvSIM(timeseries , error=error,
              param=list(sigma=sigma_1, theta=theta), model="RWTS", nsim=1)
data_2<-mvSIM(timeseries +100, error=error,
              param=list(sigma=sigma_2, theta=data_1[100,]), model="RWTS", nsim=1)

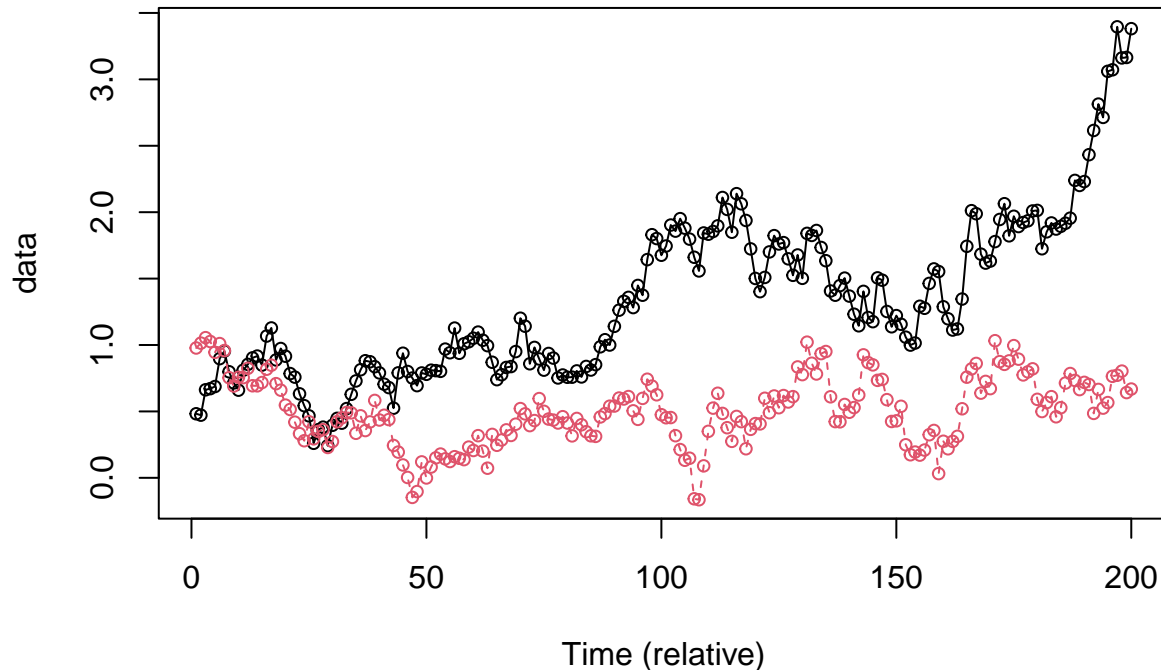
```



```
data <- rbind(data_1,data_2)
```

```
# plot the time serie
```

```
matplot(data, type="o", pch=1, xlab="Time (relative)", cex=0.8)
```



```
# 1) log-likelihood function
```

```
fun_ts_1 <- mvRWTS(timeseries , data_1, error=error, optimization="fixed")
```

```
> No optimization performed, only the Log-likelihood function is returned.
```

```
fun_ts_2 <- mvRWTS(timeseries +100, data_2, error=error, optimization="fixed")
```

```
> No optimization performed, only the Log-likelihood function is returned.
```

```
# a model of shift
```

```
log_lik_RWshift <- function(par){
  # compute the log-likelihood for the first bin
  part1 <- fun_ts_1$llik(par[1:3], theta=TRUE)
  # compute the log-likelihood for the second bin using the
  # expectation of the first bin and sigma2
  part2 <- fun_ts_2$llik(c(par[4:6],part1$theta), root.mle=FALSE)

  # the log-likelihood
  l11 <- part1$logl; l12 <- part2
  return(l11+l12)
}
```

```
# 2) starting values (only for sigma because theta is computed analytically)
```

```
guess_value <- c(chol(sigma_1)[upper.tri(sigma_1, diag=TRUE)],
                 chol(sigma_2)[upper.tri(sigma_2, diag=TRUE)])
```

```
# optimize the model!
```

```
fit <- optim(guess_value, function(par){log_lik_RWshift(par)},
```

```

        method="Nelder-Mead", control=list(fnscale=-1))

# plot the results
results <- list(sigma_1=fun_ts_1$param$sigmafun(fit$par[1:3]),
               sigma_2=fun_ts_2$param$sigmafun(fit$par[4:6]),
               theta=fun_ts_1$llik(fit$par[1:3], theta=TRUE)$theta,
               llik=fit$value)
print(results)

> $sigma_1
>           [,1]      [,2]
> [1,] 0.012569443 0.003547747
> [2,] 0.003547747 0.008824665
>
> $sigma_2
>           [,1]      [,2]
> [1,] 0.025662850 0.007850675
> [2,] 0.007850675 0.020154634
>
> $theta
> [1] 0.4803513 0.9819471
>
> $llik
> [1] 277.1485

```

14 Bayesian mcmc

mvMORPH models can be estimated using Bayesian mcmc. For instance we can use weakly informative priors using the various parameterizations in **mvMORPH**, or directly put priors on the final parameters (e.g., the inverse Wishart for the rate matrix sigma). Here is an example using the separation strategy based on the spherical parameterization (angles in the interval $[0, \pi]$ to ensure the uniqueness of the spherical parameterization; and standard deviations expressed as uniform priors on $[1e-5, 0.4]$ (but half-t or inverse Gamma should be preferred); see for instance Lu & Ades 2009; and the matrix parameterization section above).

```

set.seed(1)
tree <- pbtree(n=50)
# Simulate the traits
sigma<-matrix(c(0.1,0.05,0.05,0.1),2)
theta<-c(0,0)
data<-mvSIM(tree, param=list(sigma=sigma, theta=theta), model="BM1", nsim=1)

# Retrieve the log-likelihood of the model (we can use optimization="fixed")
bm_model <- mvBM(tree, data, model="BM1", method="pic")

# define weakly informative prior for the correlations and standard deviations separately
prior <- function(x){
  a <- dunif(x[1],min=0, max=pi, TRUE) # prior for the angles
  b <- dunif(x[2],min=1e-5, max=0.4, TRUE) # prior for the standard deviations of trait 1
  c <- dunif(x[3],min=1e-5, max=0.4, TRUE) # prior for the standard deviations of trait 2
  return(a+b+c)
}

```

```

# define the log-likelihood distribution
log_lik <- function(par){
  ll <- bm_model$llik(par)
  pr <- prior(par)
  return(ll+pr)
}

# Use an mcmc sampler
require(spBayes)
require(coda)
start_val <- bm_model$param$opt$par #the ML values
n.batch <- 500
l.batch <- 25

# run the mcmc
fit <- adaptMetropGibbs(log_lik, starting=start_val, batch=n.batch, batch.length=l.batch)

# plot the results
chain <- mcmc(fit$p.theta.samples)
plot(chain)

# check the distribution of the transformed values
rate_matrix <- t(apply(fit$p.theta.samples, 1, bm_model$param$sigmafun))
colnames(rate_matrix) <- c("Sigma [1,1]", "Sigma [1,2]", "Sigma [2,1]", "Sigma [2,2]")
chain2 <- mcmc(rate_matrix)
plot(chain2)

```