

AMELIA II: A Program for Missing Data

James Honaker, Gary King, and Matthew Blackwell

Version 1.7.5

May 7, 2018

Contents

1	Introduction	3
2	What Amelia Does	3
2.1	Assumptions	4
2.2	Algorithm	4
2.3	Analysis	5
3	Versions of Amelia	6
3.1	Installation and Updates from R	7
3.2	Installation in Windows of AmeliaView as a Standalone Program	7
3.3	Linux (local installation)	7
4	A User's Guide	8
4.1	Data and Initial Results	8
4.2	Multiple Imputation	10
4.2.1	Saving imputed datasets	11
4.2.2	Combining Multiple Amelia Runs	13
4.2.3	Screen Output	15
4.3	Parallel Imputation Using Multicore CPUs	16
4.4	Imputation-improving Transformations	16
4.4.1	Ordinal	17
4.4.2	Nominal	18
4.4.3	Natural Log	19
4.4.4	Square Root	20
4.4.5	Logistic	20
4.5	Identification Variables	20
4.6	Time Series, or Time Series Cross Sectional Data	21
4.6.1	Lags and Leads	22
4.7	Including Prior Information	22
4.7.1	Ridge Priors for High Missingness, Small n 's, or Large Correlations	22
4.7.2	Observation-level priors	24

4.7.3	Logical bounds	27
4.8	Diagnostics	28
4.8.1	Comparing Densities	28
4.8.2	Overimpute	29
4.8.3	Overdispersed Starting Values	34
4.8.4	Time-series plots	34
4.8.5	Missingness maps	37
4.9	Post-imputation Transformations	39
4.10	Analysis Models	40
4.11	The amelia class	43
5	AmeliaView Menu Guide	45
5.1	Loading AmeliaView	45
5.2	Loading a data set into AmeliaView	45
5.3	Variable dashboard	45
5.4	Amelia Options	47
5.4.1	Numerical Options	49
5.4.2	Add Distribution Prior	50
5.4.3	Add Range Prior	51
5.5	Imputing and checking diagnostics	52
5.5.1	Diagnostics Dialog	52
5.6	Sessions	53

1 Introduction

Missing data is a ubiquitous problem in social science data. Respondents do not answer every question, countries do not collect statistics every year, archives are incomplete, subjects drop out of panels. Most statistical analysis methods, however, assume the absence of missing data, and are only able to include observations for which every variable is measured. Amelia III allows users to impute (“fill in” or rectangularize) incomplete data sets so that analyses which require complete observations can appropriately use all the information present in a dataset with missingness, and avoid the biases, inefficiencies, and incorrect uncertainty estimates that can result from dropping all partially observed observations from the analysis.

Amelia III performs *multiple imputation*, a general-purpose approach to data with missing values. Multiple imputation has been shown to reduce bias and increase efficiency compared to listwise deletion. Furthermore, ad-hoc methods of imputation, such as mean imputation, can lead to serious biases in variances and covariances. Unfortunately, creating multiple imputations can be a burdensome process due to the technical nature of algorithms involved. Amelia provides users with a simple way to create and implement an imputation model, generate imputed datasets, and check its fit using diagnostics.

The Amelia III program goes several significant steps beyond the capabilities of the first version of Amelia (Honaker, Joseph, King, Scheve and Singh., 1998-2002). For one, the bootstrap-based EMB algorithm included in Amelia III can impute many more variables, with many more observations, in much less time. The great simplicity and power of the EMB algorithm made it possible to write Amelia III so that it virtually never crashes — which to our knowledge makes it unique among all existing multiple imputation software — and is much faster than the alternatives too. Amelia III also has features to make valid and much more accurate imputations for cross-sectional, time-series, and time-series-cross-section data, and allows the incorporation of observation and data-matrix-cell level prior information. In addition to all of this, Amelia III provides many diagnostic functions that help users check the validity of their imputation model. This software implements the ideas developed in Honaker and King (2010).

2 What Amelia Does

Multiple imputation involves imputing m values for each missing cell in your data matrix and creating m “completed” data sets. Across these completed data sets, the observed values are the same, but the missing values are filled in with a distribution of imputations that reflect the uncertainty about the missing data. After imputation with Amelia III’s EMB algorithm, you can apply whatever statistical method you would have used if there had been no missing values to each of the m data sets, and use a simple procedure, described below, to combine the results¹. Under normal circumstances, you only need to impute once and can then analyze the m imputed

¹You can combine the results automatically by doing your data analyses within Zelig for R, or within Clarify for Stata; see <http://gking.harvard.edu/stats.shtml>.

data sets as many times and for as many purposes as you wish. The advantage of `Amelia III` is that it combines the comparative speed and ease-of-use of our algorithm with the power of multiple imputation, to let you focus on your substantive research questions rather than spending time developing complex application-specific models for nonresponse in each new data set. Unless the rate of missingness is very high, $m = 5$ (the program default) is probably adequate.

2.1 Assumptions

The imputation model in `Amelia III` assumes that the complete data (that is, both observed and unobserved) are multivariate normal. If we denote the $(n \times k)$ dataset as D (with observed part D^{obs} and unobserved part D^{mis}), then this assumption is

$$D \sim \mathcal{N}_k(\mu, \Sigma), \tag{1}$$

which states that D has a multivariate normal distribution with mean vector μ and covariance matrix Σ . The multivariate normal distribution is often a crude approximation to the true distribution of the data, yet there is evidence that this model works as well as other, more complicated models even in the face of categorical or mixed data (see Schafer, 1997; Schafer and Olsen, 1998). Furthermore, transformations of many types of variables can often make this normality assumption more plausible (see 4.4 for more information on how to implement this in `Amelia`).

The essential problem of imputation is that we only observe D^{obs} , not the entirety of D . In order to gain traction, we need to make the usual assumption in multiple imputation that the data are *missing at random* (MAR). This assumption means that the pattern of missingness only depends on the observed data D^{obs} , not the unobserved data D^{mis} . Let M to be the missingness matrix, with cells $m_{ij} = 1$ if $d_{ij} \in D^{\text{mis}}$ and $m_{ij} = 0$ otherwise. Put simply, M is a matrix that indicates whether or not a cell is missing in the data. With this, we can define the MAR assumption as

$$p(M|D) = p(M|D^{\text{obs}}). \tag{2}$$

Note that MAR includes the case when missing values are created randomly by, say, coin flips, but it also includes many more sophisticated missingness models. When missingness is not dependent on the data at all, we say that the data are *missing completely at random* (MCAR). `Amelia` requires both the multivariate normality and the MAR assumption (or the simpler special case of MCAR). Note that the MAR assumption can be made more plausible by including additional variables in the dataset D in the imputation dataset than just those eventually envisioned to be used in the analysis model.

2.2 Algorithm

In multiple imputation, we are concerned with the complete-data parameters, $\theta = (\mu, \Sigma)$. When writing down a model of the data, it is clear that our observed data is actually D^{obs} and M , the missingness matrix. Thus, the likelihood of our observed

data is $p(D^{\text{obs}}, M|\theta)$. Using the MAR assumption², we can break this up,

$$p(D^{\text{obs}}, M|\theta) = p(M|D^{\text{obs}})p(D^{\text{obs}}|\theta). \quad (3)$$

As we only care about inference on the complete data parameters, we can write the likelihood as

$$L(\theta|D^{\text{obs}}) \propto p(D^{\text{obs}}|\theta), \quad (4)$$

which we can rewrite using the law of iterated expectations as

$$p(D^{\text{obs}}|\theta) = \int p(D|\theta)dD^{\text{mis}}. \quad (5)$$

With this likelihood and a flat prior on θ , we can see that the posterior is

$$p(\theta|D^{\text{obs}}) \propto p(D^{\text{obs}}|\theta) = \int p(D|\theta)dD^{\text{mis}}. \quad (6)$$

The main computational difficulty in the analysis of incomplete data is taking draws from this posterior. The EM algorithm (Dempster, Laird and Rubin, 1977) is a simple computational approach to finding the mode of the posterior. Our EMB algorithm combines the classic EM algorithm with a bootstrap approach to take draws from this posterior. For each draw, we bootstrap the data to simulate estimation uncertainty and then run the EM algorithm to find the mode of the posterior for the bootstrapped data, which gives us fundamental uncertainty too (see Honaker and King (2010) for details of the EMB algorithm).

Once we have draws of the posterior of the complete-data parameters, we make imputations by drawing values of D^{mis} from its distribution conditional on D^{obs} and the draws of θ , which is a linear regression with parameters that can be calculated directly from θ .

2.3 Analysis

In order to combine the results across m data sets, first decide on the quantity of interest to compute, such as a univariate mean, regression coefficient, predicted probability, or first difference. Then, the easiest way is to draw $1/m$ simulations of q from each of the m data sets, combine them into one set of m simulations, and then to use the standard simulation-based methods of interpretation common for single data sets (King, Tomz and Wittenberg, 2000).

Alternatively, you can combine directly and use as the multiple imputation estimate of this parameter, \bar{q} , the average of the m separate estimates, q_j ($j = 1, \dots, m$):

$$\bar{q} = \frac{1}{m} \sum_{j=1}^m q_j. \quad (7)$$

²There is an additional assumption hidden here that M does not depend on the complete-data parameters.

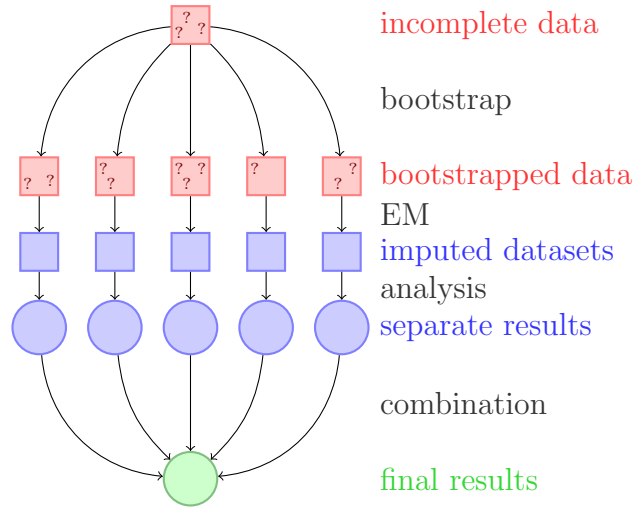


Figure 1: A schematic of our approach to multiple imputation with the EMB algorithm.

The variance of the point estimate is the average of the estimated variances from *within* each completed data set, plus the sample variance in the point estimates *across* the data sets (multiplied by a factor that corrects for the bias because $m < \infty$). Let $SE(q_j)^2$ denote the estimated variance (squared standard error) of q_j from the data set j , and $S_q^2 = \sum_{j=1}^m (q_j - \bar{q})^2 / (m - 1)$ be the sample variance across the m point estimates. The standard error of the multiple imputation point estimate is the square root of

$$SE(q)^2 = \frac{1}{m} \sum_{j=1}^m SE(q_j)^2 + S_q^2(1 + 1/m). \quad (8)$$

3 Versions of Amelia

Two versions of Amelia III are available, each with its own advantages and drawbacks, but both of which use the same underlying code and algorithms. First, Amelia III exists as a package for the R statistical software package. Users can utilize their knowledge of the R language to run Amelia III at the command line or to create scripts that will run Amelia III and preserve the commands for future use. Alternatively, you may prefer AmeliaView, where an interactive Graphical User Interface (GUI) allows you to set options and run Amelia without any knowledge of the R programming language.

Both versions of Amelia III are available on the Windows, Mac OS X, and Linux platforms and Amelia III for R runs in any environment that R can. All versions of Amelia require the R software, which is freely available at <http://www.r-project.org/>.

Before installing Amelia III, you must have installed R version 2.1.0 or higher, which is freely available at <http://www.r-project.org/>.

3.1 Installation and Updates from R

To install the Amelia package on any platform, simply type the following at the R command prompt,

```
> install.packages("Amelia")
```

and R will automatically install the package to your system from CRAN. If you wish to use the most current beta version of Amelia feel free to install the test version,

```
> install.packages("Amelia", repos = "http://gking.harvard.edu")
```

In order to keep your copy of Amelia completely up to date, you should use the command

```
> update.packages()
```

3.2 Installation in Windows of AmeliaView as a Standalone Program

To install a standalone version of AmeliaView in the Windows environment, simply download the installer `setup.exe` from <http://gking.harvard.edu/amelia/> and run it. The installer will ask you to choose a location to install Amelia III. If you have installed R with the default options, Amelia III will automatically find the location of R. If the installer cannot find R, it will ask you to locate the directory of the most current version of R. Make sure you choose the directory name that includes the version number of R (e.g. C:/Program Files/R/R-2.9.0) and contains a subdirectory named `bin`. The installer will also put shortcuts on your Desktop and Start Menu.

Even users familiar with the R language may find it useful to utilize AmeliaView to set options on variables, change arguments, or run diagnostics. From the command line, AmeliaView can be brought up with the call:

```
> library(Amelia)
> AmeliaView()
```

3.3 Linux (local installation)

Installing Amelia on a Linux system is slightly more complicated due to user permissions. If you are running R with root access, you can simply run the above installation procedure. If you do not have root access, you can install Amelia to a local library. First, create a local directory to house the packages,

```
w4:mblackwell [~]: mkdir ~/myrlibrary
```

and then, in an R session, install the package directing R to this location:

```
> install.packages("Amelia", lib = "~/myrlibrary")
```

Once this is complete you need to edit or create your R profile. Locate or create `~.Rprofile` in your home directory and add this line:

```
.libPath("~/myrlibrary")
```

This will add your local library to the list of library paths that R searches in when you load libraries.

Linux users can use `AmeliaView` in the same way as Windows users of `Amelia` for R. From the command line, `AmeliaView` can be brought up with the call:

```
> AmeliaView()
```

4 A User's Guide

4.1 Data and Initial Results

We now demonstrate how to use `Amelia` using data from Milner and Kubota (2005) which studies the effect of democracy on trade policy. For the purposes of this user's guide, we will use a subset restricted to nine developing countries in Asia from 1980 to 1999³. This dataset includes 9 variables: year (`year`), country (`country`), average tariff rates (`tariff`), Polity IV score⁴ (`polity`), total population (`pop`), gross domestic product per capita (`gdp.pc`), gross international reserves (`intresmi`), a dummy variable signifying whether the country had signed an IMF agreement in that year (`signed`), a measure of financial openness (`fivop`), and a measure of US hegemony⁵ (`usheg`). These variables correspond to the variables used in the analysis model of Milner and Kubota (2005) in table 2.

We first load the `Amelia` and the data:

```
> require(Amelia)
> data(freetrade)
```

We can check the summary statistics of the data to see that there is missingness on many of the variables:

```
> summary(freetrade)
```

year	country	tariff	polity
Min. :1981	Length:171	Min. : 7.1	Min. : -8.0
1st Qu.:1985	Class :character	1st Qu.: 16.3	1st Qu.: -2.0
Median :1990	Mode :character	Median : 25.2	Median : 5.0
Mean :1990		Mean : 31.6	Mean : 2.9
3rd Qu.:1995		3rd Qu.: 40.8	3rd Qu.: 8.0

³We have artificially added some missingness to these data for presentational purposes. You can access the original data at <http://www.princeton.edu/~hmilner/Research.htm>

⁴The Polity score is a number between -10 and 10 indicating how democratic a country is. A fully autocratic country would be a -10 while a fully democratic country would be 10.

⁵This measure of US hegemony is the US imports and exports as a percent of the world total imports and exports.


```

Max.      :1999
pop
Min.      :1.41e+07
1st Qu.:1.97e+07
Median    :5.28e+07
Mean      :1.50e+08
3rd Qu.:1.21e+08
Max.      :9.98e+08

gdp.pc
Min.      : 150
1st Qu.: 420
Median    : 814
Mean      : 1867
3rd Qu.: 2463
Max.      :12086

intresmi
Min.      :0.904
1st Qu.:2.223
Median    :3.182
Mean      :3.375
3rd Qu.:4.406
Max.      :7.935
NA's      :13

signed
Min.      :0.000
1st Qu.:0.000
Median    :0.000
Mean      :0.155
3rd Qu.:0.000
Max.      :1.000
NA's      :3

fiveop
Min.      :12.3
1st Qu.:12.5
Median    :12.6
Mean      :12.7
3rd Qu.:13.2
Max.      :13.2
NA's      :18

usheg
Min.      :0.256
1st Qu.:0.262
Median    :0.276
Mean      :0.276
3rd Qu.:0.289
Max.      :0.308

```

In the presence of missing data, most statistical packages use *listwise deletion*, which removes any row that contains a missing value from the analysis. Using the base model of Milner and Kubota (2005) table 2, we run a simple linear model in R, which uses listwise deletion:

```
> summary(lm(tariff ~ polity + pop + gdp.pc + year + country,
+           data = freetrade))
```

Call:

```
lm(formula = tariff ~ polity + pop + gdp.pc + year + country,
    data = freetrade)
```

Residuals:

```

      Min       1Q   Median       3Q      Max
-30.764  -3.259   0.087   2.598  18.310

```

Coefficients:

```

              Estimate Std. Error t value Pr(>|t|)
(Intercept)    1.97e+03  4.02e+02   4.91 3.6e-06
polity         -1.37e-01  1.82e-01  -0.75  0.45
pop            -2.02e-07  2.54e-08  -7.95 3.2e-12
gdp.pc         6.10e-04  7.44e-04   0.82  0.41
year           -8.71e-01  2.08e-01  -4.18 6.4e-05
countryIndonesia -1.82e+02  1.86e+01  -9.82 3.0e-16
countryKorea    -2.20e+02  2.08e+01 -10.61 < 2e-16
countryMalaysia -2.25e+02  2.17e+01 -10.34 < 2e-16
countryNepal    -2.16e+02  2.25e+01  -9.63 7.7e-16
countryPakistan -1.55e+02  1.98e+01  -7.84 5.6e-12

```

countryPhilippines	-2.04e+02	2.09e+01	-9.77	3.7e-16
countrySriLanka	-2.09e+02	2.21e+01	-9.46	1.8e-15
countryThailand	-1.96e+02	2.10e+01	-9.36	3.0e-15

Residual standard error: 6.22 on 98 degrees of freedom

(60 observations deleted due to missingness)

Multiple R-squared: 0.925, Adjusted R-squared: 0.915

F-statistic: 100 on 12 and 98 DF, p-value: <2e-16

Note that 60 of the 171 original observations are deleted due to missingness. These observations, however, are partially observed, and contain valuable information about the relationships between those variables which are present in the partially completed observations. Multiple imputation will help us retrieve that information and make better, more efficient, inferences.

4.2 Multiple Imputation

When performing multiple imputation, the first step is to identify the variables to include in the imputation model. It is crucial to include at least as much information as will be used in the analysis model. That is, any variable that will be in the analysis model should also be in the imputation model. This includes any transformations or interactions of variables that will appear in the analysis model.

In fact, it is often useful to add more information to the imputation model than will be present when the analysis is run. Since imputation is predictive, any variables that would increase predictive power should be included in the model, even if including them in the analysis model would produce bias in estimating a causal effect (such as for post-treatment variables) or collinearity would preclude determining which variable had a relationship with the dependent variable (such as including multiple alternate measures of GDP). In our case, we include all the variables in `freetrade` in the imputation model, even though our analysis model focuses on `polity`, `pop` and `gdp.pc`⁶.

To create multiple imputations in `Amelia`, we can simply run

```
> a.out <- amelia(freetrade, m = 5, ts = "year", cs = "country")
```

```
-- Imputation 1 --
```

```
1 2 3 4 5 6 7 8 9 10 11 12 13 14
```

```
-- Imputation 2 --
```

```
1 2 3 4 5 6 7 8 9 10 11 12 13 14 15
```

```
-- Imputation 3 --
```

⁶Note that this specification does not utilize time or spatial data yet. The `ts` and `cs` arguments only have force when we also include `polytime` or `intercs`, discussed in section 4.6

```

  1  2  3  4  5  6  7  8  9

-- Imputation 4 --

  1  2  3  4  5  6  7  8  9 10 11 12 13 14

-- Imputation 5 --

  1  2  3  4  5  6  7  8  9 10

> a.out

```

```

Amelia output with 5 imputed datasets.
Return code: 1
Message: Normal EM convergence.

```

```

Chain Lengths:
-----
Imputation 1: 14
Imputation 2: 15
Imputation 3: 9
Imputation 4: 14
Imputation 5: 10

```

Note that our example dataset is deliberately small both in variables and in cross-sectional elements. Typical datasets may often have hundreds or possibly a couple thousand steps to the EM algorithm. Long chains should remind the analyst to consider whether transformations of the variables would more closely fit the multivariate normal assumptions of the model (correct but omitted transformations will shorten the number of steps and improve the fit of the imputations), but do not necessarily denote problems with the imputation model.

The output gives some information about how the algorithm ran. Each of the imputed datasets is now in the list `a.out$imputations`. Thus, we could plot a histogram of the `tariff` variable from the 3rd imputation,

```
> hist(a.out$imputations[[3]]$tariff, col="grey", border="white")
```

4.2.1 Saving imputed datasets

If you need to save your imputed datasets, one direct method is to save the output list from `amelia`,

```
> save(a.out, file = "imputations.RData")
```

As in the previous example, the i th imputed datasets can be retrieved from this list as `a.out$imputations[[i]]`.

In addition, you can save each of the imputed datasets to its own file using the `write.amelia` command,

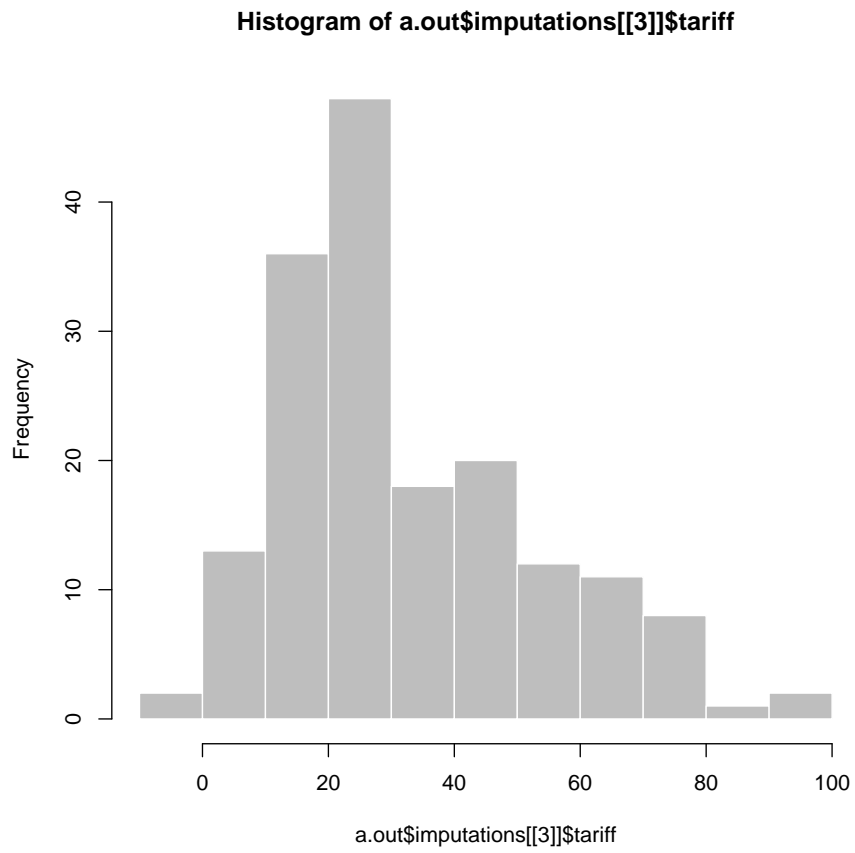


Figure 2: Histogram of the `tariff` variable from the 3rd imputed dataset.

```
> write.amelia(obj=a.out, file.stem = "outdata")
```

This will create one comma-separated value file for each imputed dataset in the following manner:

```
outdata1.csv
outdata2.csv
outdata3.csv
outdata4.csv
outdata5.csv
```

The `write.amelia` function can also save files in tab-delimited and Stata (`.dta`) file formats. For instance, to save Stata files, simply change the `format` argument to `"dta"`,

```
> write.amelia(obj=a.out, file.stem = "outdata", format = "dta")
```

Additionally, `write.amelia` can create a “stacked” version of the imputed dataset which stacks each imputed dataset on top of one another. This can be done by setting the `separate` argument to `FALSE`. The resulting matrix is of size $(N \cdot m) \times p$ if the original dataset is excluded (`orig.data = FALSE`) and of size $(N \cdot (m + 1)) \times p$ if it is included (`orig.data = TRUE`). The stacked dataset will include a variable (set with `impvar`) that indicates to which imputed dataset the observation belongs. See Section 4.10 for a description of how to use this stacked dataset with the `mi` commands in Stata.

4.2.2 Combining Multiple Amelia Runs

The EMB algorithm is what computer scientists call *embarrassingly parallel*, meaning that it is simple to separate each imputation into parallel processes. With Amelia it is simple to run subsets of the imputations on different machines and then combine them after the imputation for use in analysis model. This allows for a huge increase in the speed of the algorithm.

Output lists from different Amelia runs can be combined together into a new list. For instance, suppose that we wanted to add another ten imputed datasets to our earlier call to `amelia`. First, run the function to get these additional imputations,

```
> a.out.more <- amelia(freetrade, m = 10, ts = "year", cs = "country", p2s=0)
> a.out.more
```

Amelia output with 10 imputed datasets.

Return code: 1

Message: Normal EM convergence.

Chain Lengths:

Imputation 1: 12

Imputation 2: 13

```
Imputation 3: 13
Imputation 4: 14
Imputation 5: 17
Imputation 6: 15
Imputation 7: 15
Imputation 8: 15
Imputation 9: 15
Imputation 10: 19
```

then combine this output with our original output using the `ameliabind` function,

```
> a.out.more <- ameliabind(a.out, a.out.more)
> a.out.more
```

```
Amelia output with 15 imputed datasets.
Return code: 1
Message: Normal EM convergence
```

```
Chain Lengths:
-----
Imputation 1: 14
Imputation 2: 15
Imputation 3: 9
Imputation 4: 14
Imputation 5: 10
Imputation 6: 12
Imputation 7: 13
Imputation 8: 13
Imputation 9: 14
Imputation 10: 17
Imputation 11: 15
Imputation 12: 15
Imputation 13: 15
Imputation 14: 15
Imputation 15: 19
```

This function binds the two outputs into the same output so that you can pass the combined imputations easily to analysis models and diagnostics. Note that `a.out.more` now has a total of 15 imputations.

A simple way to execute a parallel processing scheme with Amelia would be to run `amelia` with `m` set to 1 on m different machines or processors, save each output using the `save` function, load them all on the same R session using `load` command and then combine them using `ameliabind`. In order to do this, however, make sure to name each of the outputs a different name so that they do not overwrite each other when loading into the same R session. Also, some parallel environments will dump all generated files into a common directory, where they may overwrite each other. If it is convenient in a parallel environment to run a large number of `amelia`

calls from a single piece of code, one useful way to avoid overwriting is to create the `file.stem` with a random suffix. For example:

```
> b<-round(runif(1,min=1111,max=9999))
> random.name<-paste("am",b,sep="")
> amelia <- write.amelia(obj=a.out, file.stem = random.name)
```

4.2.3 Screen Output

Screen output can be adjusted with the “print to screen” argument, `p2s`. At a value of 0, no screen printing will occur. This may be useful in large jobs or simulations where a very large number of imputation models may be required. The default value of 1, lists each bootstrap, and displays the number of iterations required to reach convergence in that bootstrapped dataset. The value of 2 gives more thorough screen output, including, at each iteration, the number of parameters that have significantly changed since the last iteration. This may be useful when the EM chain length is very long, as it can provide an intuition for many parameters still need to converge in the EM chain, and a sense of the time remaining. However, it is worth noting that the last several parameters can often take a significant fraction of the total number of iterations to converge. Setting `p2s` to 2 will also generate information on how EM algorithm is behaving, such as a `!` when the current estimated complete data covariance matrix is not invertible and a `*` when the likelihood has not monotonically increased in that step. Having many of these two symbols in the screen output is an indication of a problematic imputation model⁷.

An example of the output when `p2s` is 2 would be

```
> amelia(freetrade, m = 1, ts = "year", cs = "country", p2s = 2)
```

```
amelia starting
beginning prep functions
Variables used:  tariff polity pop gdp.pc intresmi signed fiveop usheg
running bootstrap
-- Imputation 1 --
setting up EM chain indicies

  1(44)  2(34)  3(31)  4(25)  5(24)  6(23)  7(20)  8(17)  9(15) 10(14) 11(6) 12(6)

saving and cleaning
```

```
Amelia output with 1 imputed datasets.
Return code:  1
Message:  Normal EM convergence.
```

⁷Problems of non-invertible matrices often mean that current guess for the covariance matrix is singular. This is a sign that there may be two highly correlated variables in the model. One way to resolve is to use a ridge prior (see 4.7.1)

Chain Lengths:

Imputation 1: 15

4.3 Parallel Imputation Using Multicore CPUs

Each imputation in the above EMB algorithm is completely independent of any other imputation, a property called embarrassingly parallel. This type of approach can take advantage of the multiple-core infrastructure of modern CPUs. Each core in a multi-core processor can execute independent operations in parallel. Amelia can utilize this parallel processing internally *via* the `parallel` and the `ncpus` arguments. The `parallel` argument sets the parallel processing backend, either with "multicore" or "snow" (or "no" for no parallel processing). The "multicore" backend is not available on Windows systems, but tends to be quicker at parallel processing. On a Windows system, the "snow" backend provides parallel processing through a cluster of worker processes across the CPUs. You can set the default for this argument using the `amelia.parallel` option. This allows you to run Amelia in parallel as the default for an entire R session without setting arguments in the `amelia` call.

For each of the parallel backends, Amelia requires a number of CPUs to use in parallel. This can be set using the `ncpus` argument. It can be higher than the number of physical cores in the system if hyperthreading or other technologies are available. You can use the `parallel::detectCores` function to determine how many cores are available on your machine. The default for this argument can be set using the `amelia.ncpus` option.

On Unix-alike systems (such as Mac OS X and Linux distributions), the "multicore" backend automatically sets up and stops the parallel workers by forking the process. On Windows, the "snow" backend requires more attention. Amelia will attempt to create a parallel cluster of worker processes (since Windows systems cannot fork a process) and will stop this cluster after the imputations are complete. Alternatively, Amelia also has a `cl` argument, which accepts a predefined cluster made using the `parallel::makePSOCKcluster`. For more information about parallel processing in R, see the documentation for the `parallel` package that ships along with R.

4.4 Imputation-improving Transformations

Social science data commonly includes variables that fail to fit to a multivariate normal distribution. Indeed, numerous models have been introduced specifically to deal with the problems they present. As it turns out, much evidence in the literature (discussed in King et al. 2001) indicates that the multivariate normal model used in Amelia usually works well for the imputation stage even when discrete or non-normal variables are included and when the analysis stage involves these limited dependent variable models. Nevertheless, Amelia includes some limited capacity to deal directly with ordinal and nominal variables and to modify variables that require other transformations. In general nominal and log transform variables should be declared to Amelia, whereas ordinal (including dichotomous) variables often need

not be, as described below. (For harder cases, see (Schafer, 1997), for specialized MCMC-based imputation models for discrete variables.)

Although these transformations are taken internally on these variables to better fit the data to the multivariate normal assumptions of the imputation model, all the imputations that are created will be returned in the original untransformed form of the data. If the user has already performed transformations on their data (such as by taking a log or square root prior to feeding the data to `amelia`) these do not need to be declared, as that would result in the transformation occurring *doubly* in the imputation model. The fully imputed data sets that are returned will always be in the form of the original data that is passed to the `amelia` routine.

4.4.1 Ordinal

In much statistical research, researchers treat independent ordinal (including dichotomous) variables as if they were really continuous. If the analysis model to be employed is of this type, then nothing extra is required of the of the imputation model. Users are advised to allow `Amelia` to impute non-integer values for any missing data, and to use these non-integer values in their analysis. Sometimes this makes sense, and sometimes this defies intuition. One particular imputation of 2.35 for a missing value on a seven point scale carries the intuition that the respondent is between a 2 and a 3 and most probably would have responded 2 had the data been observed. This is easier to accept than an imputation of 0.79 for a dichotomous variable where a zero represents a male and a one represents a female respondent. However, in both cases the non-integer imputations carry more information about the underlying distribution than would be carried if we were to force the imputations to be integers. Thus whenever the analysis model permits, missing ordinal observations should be allowed to take on continuously valued imputations.

In the `freetrade` data, one such ordinal variable is `polity` which ranges from -10 (full autocracy) to 10 (full democracy). If we tabulate this variable from one of the imputed datasets,

```
> table(a.out$imputations[[3]]$polity)
```

	-8	-7	-6
	1	22	4
-5.80706995403517		-5	-4
	1	7	3
	-2	-1	2
	9	1	7
	3	4	5
	7	15	26
5.73196387493742		6	7
	1	13	5
	8	9	
	36	13	

we can see that there is one imputation between -4 and -3 and one imputation between 6 and 7. Again, the interpretation of these values is rather straightforward even if they are not strictly in the coding of the original Polity data.

Often, however, analysis models require some variables to be strictly ordinal, as for example, when the dependent variable will be modeled in a logistical or Poisson regression. Imputations for variables set as ordinal are created by taking the continuously valued imputation and using an appropriately scaled version of this as the probability of success in a binomial distribution. The draw from this binomial distribution is then translated back into one of the ordinal categories.

For our data we can simply add `polity` to the `ords` argument:

```
> a.out1 <- amelia(freetrade, m = 5, ts = "year", cs = "country", ords =
+                 "polity", p2s = 0)
> table(a.out1$imputations[[3]]$polity)

-8 -7 -6 -5 -4 -2 -1  1  2  3  4  5  6  7  8  9
 1 22  4  7  3  9  1  1  7  7 15 27 13  5 36 13
```

Now, we can see that all of the imputations fall into one of the original polity categories.

4.4.2 Nominal

Nominal variables⁸ must be treated quite differently than ordinal variables. Any multinomial variables in the data set (such as religion coded 1 for Catholic, 2 for Jewish, and 3 for Protestant) must be specified to Amelia. In our `freetrade` dataset, we have `signed` which is 1 if a country signed an IMF agreement in that year and 0 if it did not. Of course, our first imputation did not limit the imputations to these two categories

```
> table(a.out1$imputations[[3]]$signed)

      0 0.223643650691989 0.332106092816539
      142                1                1
0.416019978704527      1
      1                26
```

In order to fix this for a p -category multinomial variable, Amelia will determine p (as long as your data contain at least one value in each category), and substitute $p-1$ binary variables to specify each possible category. These new $p-1$ variables will be treated as the other variables in the multivariate normal imputation method chosen, and receive continuous imputations. These continuously valued imputations will then be appropriately scaled into probabilities for each of the p possible categories, and one of these categories will be drawn, where upon the original p -category multinomial variable will be reconstructed and returned to the user. Thus all imputations will be appropriately multinomial.

For our data we can simply add `signed` to the `noms` argument:

⁸Dichotomous (two category) variables are a special case of nominal variables. For these variables, the nominal and ordinal methods of transformation in Amelia agree.

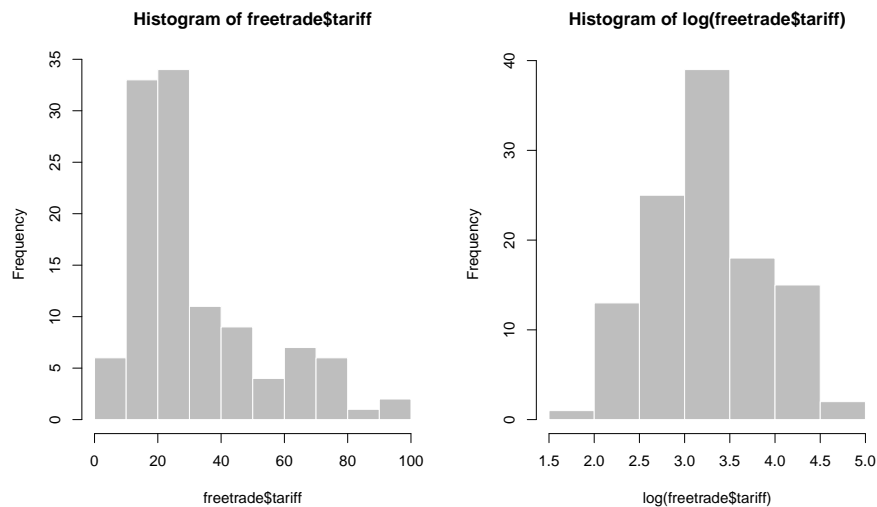


Figure 3: Histogram of `tariff` and `log(tariff)`.

```
> a.out2 <- amelia(freetrade, m = 5, ts = "year", cs = "country", noms =
+                 "signed", p2s = 0)
> table(a.out2$imputations[[3]]$signed)
```

```
 0  1
144 27
```

Note that Amelia can only fit imputations into categories that exist in the original data. Thus, if there was a third category of signed, say 2, that corresponded to a different kind of IMF agreement, but it never occurred in the original data, Amelia could not match imputations to it.

Since Amelia properly treats a p -category multinomial variable as $p-1$ variables, one should understand the number of parameters that are quickly accumulating if many multinomial variables are being used. If the square of the number of real and constructed variables is large relative to the number of observations, it is useful to use a ridge prior as in section 4.7.1.

4.4.3 Natural Log

If one of your variables is heavily skewed or has outliers that may alter the imputation in an unwanted way, you can use a natural logarithm transformation of that variable in order to normalize its distribution. This transformed distribution helps Amelia to avoid imputing values that depend too heavily on outlying data points. Log transformations are common in expenditure and economic variables where we have strong beliefs that the marginal relationship between two variables decreases as we move across the range.

For instance, figure 3 show the `tariff` variable clearly has positive (or, right) skew while its natural log transformation has a roughly normal distribution.

4.4.4 Square Root

Event count data is often heavily skewed and has nonlinear relationships with other variables. One common transformation to tailor the linear model to count data is to take the square roots of the counts. This is a transformation that can be set as an option in `Amelia`.

4.4.5 Logistic

Proportional data is sharply bounded between 0 and 1. A logistic transformation is one possible option in `Amelia` to make the distribution symmetric and relatively unbounded.

4.5 Identification Variables

Datasets often contain identification variables, such as country names, respondent numbers, or other identification numbers, codes or abbreviations. Sometimes these are text and sometimes these are numeric. Often it is not appropriate to include these variables in the imputation model, but it is useful to have them remain in the imputed datasets (However, there are models that would include the ID variables in the imputation model, such as fixed effects model for data with repeated observations of the same countries). Identification variables which are not to be included in the imputation model can be identified with the argument `idvars`. These variables will not be used in the imputation model, but will be kept in the imputed datasets.

If the `year` and `country` contained no information except labels, we could omit them from the imputation:

```
> amelia(freetrade, idvars = c("year", "country"))
```

Note that `Amelia` will return with an error if your dataset contains a factor or character variable that is not marked as a nominal or identification variable. Thus, if we were to omit the factor `country` from the `cs` or `idvars` arguments, we would receive an error:

```
> a.out2 <- amelia(freetrade, idvars = c("year"))
```

```
Amelia Error Code: 38
```

```
The following variable(s) are characters:
```

```
country
```

```
You may have wanted to set this as a ID variable to remove it  
from the imputation model or as an ordinal or nominal  
variable to be imputed. Please set it as either and  
try again.
```

In order to conserve memory, it is wise to remove unnecessary variables from a data set before loading it into `Amelia`. The only variables you should include in your data when running `Amelia` are variables you will use in the analysis stage and those variables that will help in the imputation model. While it may be tempting to simply mark unneeded variables as IDs, it only serves to waste memory and slow down the imputation procedure.

4.6 Time Series, or Time Series Cross Sectional Data

Many variables that are recorded over time within a cross-sectional unit are observed to vary smoothly over time. In such cases, knowing the observed values of observations close in time to any missing value may enormously aid the imputation of that value. However, the exact pattern may vary over time within any cross-section. There may be periods of growth, stability, or decline; in each of which the observed values would be used in a different fashion to impute missing values. Also, these patterns may vary enormously across different cross-sections, or may exist in some and not others. Amelia can build a general model of patterns within variables across time by creating a sequence of polynomials of the time index. If, for example, tariffs vary smoothly over time, then we make the modeling assumption that there exists some polynomial that describes the economy in cross-sectional unit i at time t as:

$$\text{tariff}_{ti} = \beta_0 + \beta_1 t + \beta_1 t^2 + \beta_1 t^3 \dots \quad (9)$$

And thus if we include enough higher order terms of time then the pattern between observed values of the tariff rate can be estimated. Amelia will create polynomials of time up to the user defined k -th order, ($k \leq 3$).

We can implement this with the `ts` and `polytime` arguments. If we thought that a second-order polynomial would help predict we could run

```
> a.out2 <- amelia(freetrade, ts = "year", cs = "country", polytime = 2)
```

With this input, Amelia will add covariates to the model that correspond to time and its polynomials. These covariates will help better predict the missing values.

If cross-sectional units are specified these polynomials can be interacted with the cross-section unit to allow the patterns over time to vary between cross-sectional units. Unless you strongly believe all units have the same patterns over time in all variables (including the same constant term), this is a reasonable setting. When k is set to 0, this interaction simply results in a model of *fixed effects* where every unit has a uniquely estimated constant term. Amelia does not smooth the observed data, and only uses this functional form, or one you choose, with all the other variables in the analysis and the uncertainty of the prediction, to impute the missing values.

In order to impute with trends specific to each cross-sectional unit, we can set `intercs` to `TRUE`:

```
> a.out.time <- amelia(freetrade, ts = "year", cs = "country", polytime = 2,  
+                       intercs = TRUE, p2s = 2)
```

Note that attempting to use `polytime` without the `ts` argument, or `intercs` without the `cs` argument will result in an error.

Using the `tscsPlot` function (discussed below), we can see in figure 4 that we have a much better prediction about the missing values when incorporating time than when we omit it:

```
> tscsPlot(a.out, cs = "Malaysia", main = "Malaysia (no time settings)",  
+          var = "tariff", ylim = c(-10, 60))  
> tscsPlot(a.out.time, cs = "Malaysia", main = "Malaysia (with time settings)",  
+          var = "tariff", ylim = c(-10, 60))
```

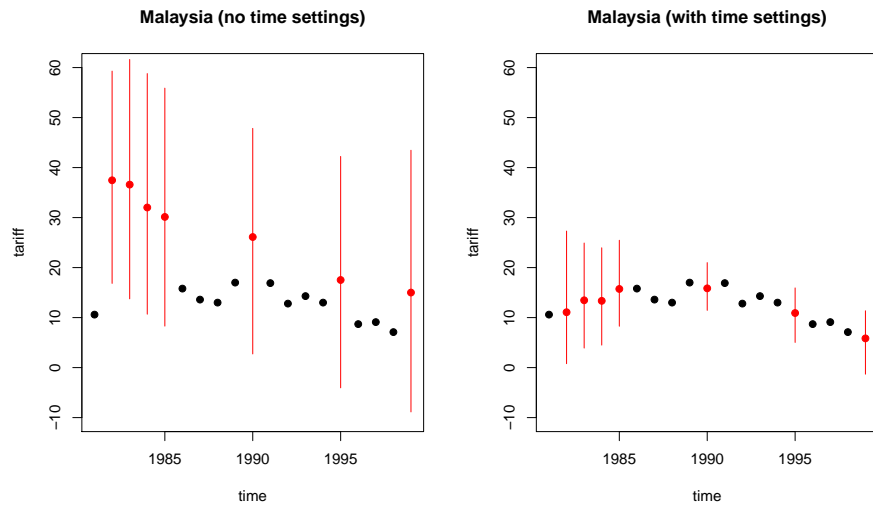


Figure 4: The increase in predictive power when using polynomials of time. The panels shows mean imputations with 95% bands (in red) and observed data point (in black). The left panel shows an imputation without using time and the right panel includes polynomials of time.

4.6.1 Lags and Leads

An alternative way of handling time-series information is to include lags and leads of certain variables into the imputation model. *Lags* are variables that take the value of another variable in the previous time period while *leads* take the value of another variable in the next time period. Many analysis models use lagged variables to deal with issues of endogeneity, thus using leads may seem strange. It is important to remember, however, that imputation models are predictive, not causal. Thus, since both past and future values of a variable are likely correlated with the present value, both lags and leads should improve the model.

If we wanted to include lags and leads of tariffs, for instance, we would simply pass this to the `lags` and `leads` arguments:

```
> a.out2 <- amelia(freetrade, ts = "year", cs = "country", lags = "tariff",
+                 leads = "tariff")
```

4.7 Including Prior Information

Amelia has a number of methods of setting priors within the imputation model. Two of these are commonly used and discussed below, ridge priors and observational priors.

4.7.1 Ridge Priors for High Missingness, Small n 's, or Large Correlations

When the data to be analyzed contain a high degree of missingness or very strong correlations among the variables, or when the number of observations is only slightly

greater than the number of parameters $p(p + 3)/2$ (where p is the number of variables), results from your analysis model will be more dependent on the choice of imputation model. This suggests more testing in these cases of alternative specifications under Amelia. This can happen when using the polynomials of time interacted with the cross section are included in the imputation model. In our running example, we used a polynomial of degree 2 and there are 9 countries. This adds $3 \times 9 - 1 = 17$ more variables to the imputation model (One of the constant “fixed effects” will be dropped so the model will be identified). When these are added, the EM algorithm can become unstable, as indicated by the vastly differing chain lengths for each imputation:

```
> a.out.time
```

```
Amelia output with 5 imputed datasets.
```

```
Return code: 1
```

```
Message: Normal EM convergence.
```

```
Chain Lengths:
```

```
-----
```

```
Imputation 1: 166
```

```
Imputation 2: 212
```

```
Imputation 3: 203
```

```
Imputation 4: 324
```

```
Imputation 5: 128
```

In these circumstances, we recommend adding a ridge prior which will help with numerical stability by shrinking the covariances among the variables toward zero without changing the means or variances. This can be done by including the `empri` argument. Including this prior as a positive number is roughly equivalent to adding `empri` artificial observations to the data set with the same means and variances as the existing data but with zero covariances. Thus, increasing the `empri` setting results in more shrinkage of the covariances, thus putting more a priori structure on the estimation problem: like many Bayesian methods, it reduces variance in return for an increase in bias that one hopes does not overwhelm the advantages in efficiency. In general, we suggest keeping the value on this prior relatively small and increase it only when necessary. A recommendation of 0.5 to 1 percent of the number of observations, n , is a reasonable starting value, and often useful in large datasets to add some numerical stability. For example, in a dataset of two thousand observations, this would translate to a prior value of 10 or 20 respectively. A prior of up to 5 percent is moderate in most applications and 10 percent is reasonable upper bound.

For our data, it is easy to code up a 1 percent ridge prior:

```
> a.out.time2 <- amelia(freetrade, ts = "year", cs = "country", polytime = 2,
+                       intercs = TRUE, p2s = 0, empri = .01*nrow(freetrade))
> a.out.time2
```

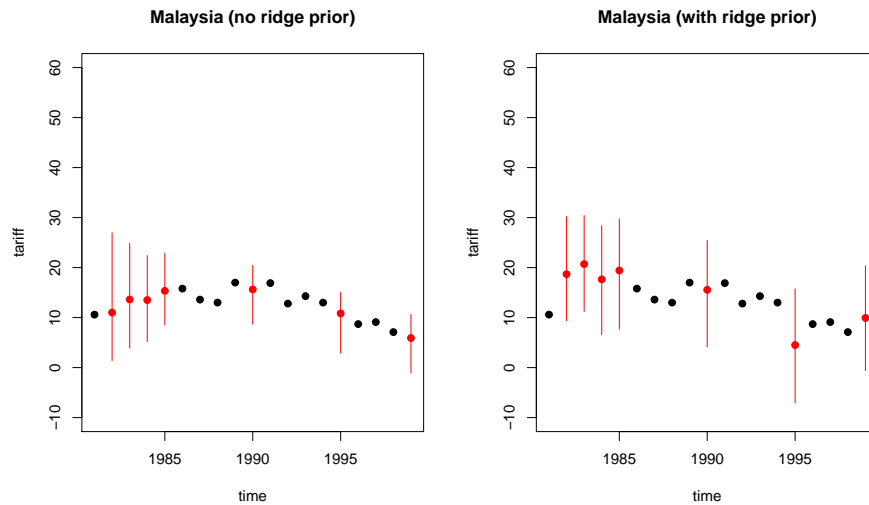


Figure 5: The difference in imputations when using no ridge prior (left) and when using a ridge prior set to 1% of the data (right).

```
Amelia output with 5 imputed datasets.
Return code: 1
Message: Normal EM convergence.
```

```
Chain Lengths:
```

```
-----
Imputation 1: 13
Imputation 2: 18
Imputation 3: 22
Imputation 4: 28
Imputation 5: 50
```

This new imputation model is much more stable and, as shown by using `tscsPlot`, produces about the same imputations as the original model (see figure 5):

```
> tscsPlot(a.out.time, cs = "Malaysia", main = "Malaysia (no ridge prior)",
+          var = "tariff", ylim = c(-10, 60))
> tscsPlot(a.out.time2, cs = "Malaysia", main = "Malaysia (with ridge prior)",
+          var = "tariff", ylim = c(-10, 60))
```

4.7.2 Observation-level priors

Researchers often have additional prior information about missing data values based on previous research, academic consensus, or personal experience. `Amelia` can incorporate this information to produce vastly improved imputations. The `Amelia` algorithm allows users to include informative Bayesian priors about individual missing data cells instead of the more general model parameters, many of which have little direct meaning.

The incorporation of priors follows basic Bayesian analysis where the imputation turns out to be a weighted average of the model-based imputation and the prior mean, where the weights are functions of the relative strength of the data and prior: when the model predicts very well, the imputation will down-weight the prior, and vice versa (Honaker and King, 2010).

The priors about individual observations should describe the analyst's belief about the distribution of the missing data cell. This can either take the form of a mean and a standard deviation or a confidence interval. For instance, we might know that 1986 tariff rates in Thailand around 40%, but we have some uncertainty as to the exact value. Our prior belief about the distribution of the missing data cell, then, centers on 40 with a standard deviation that reflects the amount of uncertainty we have about our prior belief.

To input priors you must build a priors matrix with either four or five columns. Each row of the matrix represents a prior on either one observation or one variable. In any row, the entry in the first column is the row of the observation and the entry in the second column is the column of the observation. In the four column priors matrix the third and fourth columns are the mean and standard deviation of the prior distribution of the missing value.

For instance, suppose that we had some expert prior information about tariff rates in Thailand. We know from the data that Thailand is missing tariff rates in many years,

```
> freetrade[freetrade$country == "Thailand", c("year", "country", "tariff")]
```

	year	country	tariff
153	1981	Thailand	32.3
154	1982	Thailand	NA
155	1983	Thailand	NA
156	1984	Thailand	NA
157	1985	Thailand	41.2
158	1986	Thailand	NA
159	1987	Thailand	NA
160	1988	Thailand	NA
161	1989	Thailand	40.8
162	1990	Thailand	39.8
163	1991	Thailand	37.8
164	1992	Thailand	NA
165	1993	Thailand	45.6
166	1994	Thailand	23.3
167	1995	Thailand	23.1
168	1996	Thailand	NA
169	1997	Thailand	NA
170	1998	Thailand	20.1
171	1999	Thailand	17.1

Suppose that we had expert information that tariff rates were roughly 40% in Thailand between 1986 and 1988 with about a 6% margin of error. This corresponds

to a standard deviation of about 3. In order to include this information, we must form the priors matrix:

```
> pr <- matrix(c(158,159,160,3,3,3,40,40,40,3,3,3), nrow=3, ncol=4)
> pr
```

```
      [,1] [,2] [,3] [,4]
[1,] 158   3  40   3
[2,] 159   3  40   3
[3,] 160   3  40   3
```

The first column of this matrix corresponds to the row numbers of Thailand in these three years, the second column refers to the column number of `tariff` in the data and the last two columns refer to the actual prior. Once we have this matrix, we can pass it to `amelia`,

```
> a.out.pr <- amelia(freetrade, ts = "year", cs = "country", priors = pr)
```

In the five column matrix, the last three columns describe a confidence range of the data. The columns are a lower bound, an upper bound, and a confidence level between 0 and 1, exclusive. Whichever format you choose, it must be consistent across the entire matrix. We could get roughly the same prior as above by utilizing this method. Our margin of error implies that we would want imputations between 34 and 46, so our matrix would be

```
> pr.2 <- matrix(c(158,159,160,3,3,3,34,34,34,46,46,46,.95,.95,.95), nrow=3, ncol=12)
> pr.2
```

```
      [,1] [,2] [,3] [,4] [,5]
[1,] 158   3  34  46 0.95
[2,] 159   3  34  46 0.95
[3,] 160   3  34  46 0.95
```

These priors indicate that we are 95% confident that these missing values are in the range 34 to 46.

If a prior has the value 0 in the first column, this prior will be applied to all missing values in this variable, except for explicitly set priors. Thus, we could set a prior for the entire `tariff` variable of 20, but still keep the above specific priors with the following code:

```
> pr.3 <- matrix(c(158,159,160,0,3,3,3,3,40,40,40,20,3,3,3,5), nrow=4, ncol=16)
> pr.3
```

```
      [,1] [,2] [,3] [,4]
[1,] 158   3  40   3
[2,] 159   3  40   3
[3,] 160   3  40   3
[4,]   0   3  20   5
```

4.7.3 Logical bounds

In some cases, variables in the social sciences have known logical bounds. Proportions must be between 0 and 1 and duration data must be greater than 0, for instance. Many of these logical bounds can be handled by using the correct transformation for that type of variable (see 4.4 for more details on the transformations handled by Amelia). In the occasional case that imputations must satisfy certain logical bounds not handled by these transformations, Amelia can take draws from a truncated normal distribution in order to achieve imputations that satisfy the bounds. Note, however, that this procedure imposes extremely strong restrictions on the imputations and can lead to lower variances than the imputation model implies. The mean value across all the imputed values of a missing cell is the best guess from the imputation model of that missing value. The variance of the distribution across imputed datasets correctly reflects the uncertainty in that imputation. It is often the mean imputed value that should conform to the any known bounds, even if individual imputations are drawn beyond those bounds. The mean imputed value can be checked with the diagnostics presented in the next section. In general, building a more predictive imputation model will lead to better imputations than imposing bounds.

Amelia implements these bounds by rejection sampling. When drawing the imputations from their posterior, we repeatedly resample until we have a draw that satisfies all of the logical constraints. You can set an upper limit on the number of times to resample with the `max.resample` arguments. Thus, if after `max.resample` draws, the imputations are still outside the bounds, Amelia will set the imputation at the edge of the bounds. Thus, if the bounds were 0 and 100 and all of the draws were negative, Amelia would simply impute 0.

As an extreme example, suppose that we know, for certain that tariff rates had to fall between 30 and 40. This, obviously, is not true, but we can generate imputations from this model. In order to specify these bounds, we need to generate a matrix of bounds to pass to the `bounds` argument. This matrix will have 3 columns: the first is the column for the bounded variable, the second is the lower bound and the third is the upper bound. Thus, to implement our bound on tariff rates (the 3rd column of the dataset), we would create the matrix,

```
> bds <- matrix(c(3, 30, 40), nrow = 1, ncol = 3)
> bds
```

```
      [,1] [,2] [,3]
[1,]    3   30   40
```

which we can pass to the `bounds` argument,

```
> a.out.bds <- amelia(freetrade, ts = "year", cs = "country", bounds = bds,
+                    max.resample = 1000)
```

```
-- Imputation 1 --
```

```
 1  2  3  4  5  6  7  8  9 10 11 12 13 14 15 16 17 18
```

```

-- Imputation 2 --
  1  2  3  4  5  6  7  8  9 10 11 12 13 14 15 16

-- Imputation 3 --
  1  2  3  4  5  6  7  8  9 10 11 12 13 14 15

-- Imputation 4 --
  1  2  3  4  5  6  7  8  9 10 11 12 13 14 15 16

-- Imputation 5 --
  1  2  3  4  5  6  7  8  9 10 11 12 13 14

```

The difference in results between the bounded and unbounded model are not obvious from the output, but inspection of the imputed tariff rates for Malaysia in figure 6 shows that there has been a drastic restriction of the imputations to the desired range:

```

> tscsPlot(a.out, cs = "Malaysia", main = "No logical bounds", var =
+         "tariff", ylim = c(-10,60))
> tscsPlot(a.out.bds, cs = "Malaysia", main = "Bounded between 30 and 40", var =
+         "tariff", ylim = c(-10,60))

```

Again, analysts should be extremely cautious when using these bounds as they can seriously affect the inferences from the imputation model, as shown in this example. Even when logical bounds exist, we recommend simply imputing variables normally, as the violation of the logical bounds represents part of the true uncertainty of imputation.

4.8 Diagnostics

Amelia currently provides a number of diagnostic tools to inspect the imputations that are created.

4.8.1 Comparing Densities

One check on the plausibility of the imputation model is check the distribution of imputed values to the distribution of observed values. Obviously we cannot expect, *a priori*, that these distribution will be identical as the missing values may differ systematically from the observed value—this is fundamental reason to impute to begin with! Imputations with strange distributions or those that are far from the observed data may indicate that imputation model needs at least some investigation and possibly some improvement.

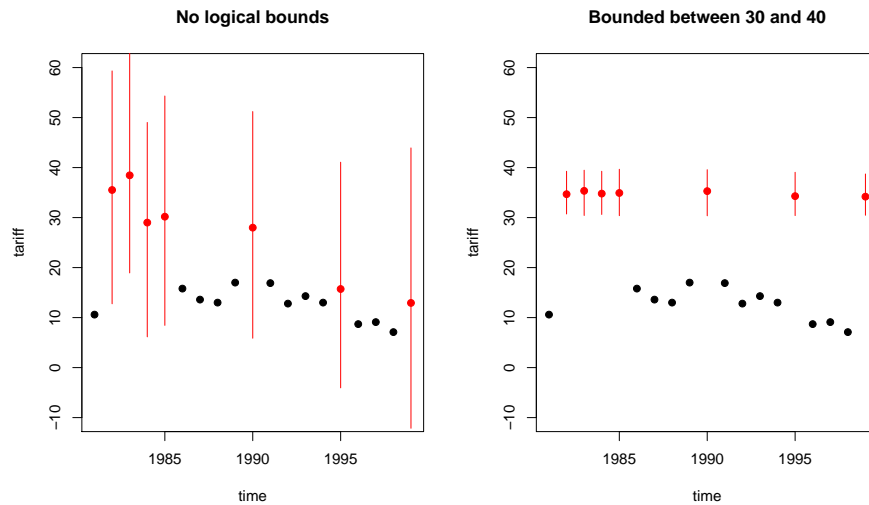


Figure 6: On the left are the original imputations without logical bounds and on the right are the imputation after imposing the bounds.

The `plot` method works on output from `amelia` and, by default, shows for each variable a plot of the relative frequencies of the observed data with an overlay of the relative frequency of the imputed values.

```
> plot(a.out, which.vars = 3:6)
```

where the argument `which.vars` indicates which of the variables to plot (in this case, we are taking the 3rd through the 6th variables).

The imputed curve (in red) plots the density of the *mean* imputation over the m datasets. That is, for each cell that is missing in the variable, the diagnostic will find the mean of that cell across each of the m datasets and use that value for the density plot. The black distributions are the those of the observed data. When variables are completely observed, their densities are plotted in blue. These graphs will allow you to inspect how the density of imputations compares to the density of observed data. Some discussion of these graphs can be found in Abayomi, Gelman and Levy (2008). Minimally, these graphs can be used to check that the mean imputation falls within known bounds, when such bounds exist in certain variables or settings.

We can also use the function `compare.density` directly to make these plots for an individual variable:

```
> compare.density(a.out, var = "signed")
```

4.8.2 Overimpute

Overimputing is a technique we have developed to judge the fit of the imputation model. Because of the nature of the missing data mechanism, it is impossible to tell whether the mean prediction of the imputation model is close to the unobserved value that is trying to be recovered. By definition this missing data does not exist to

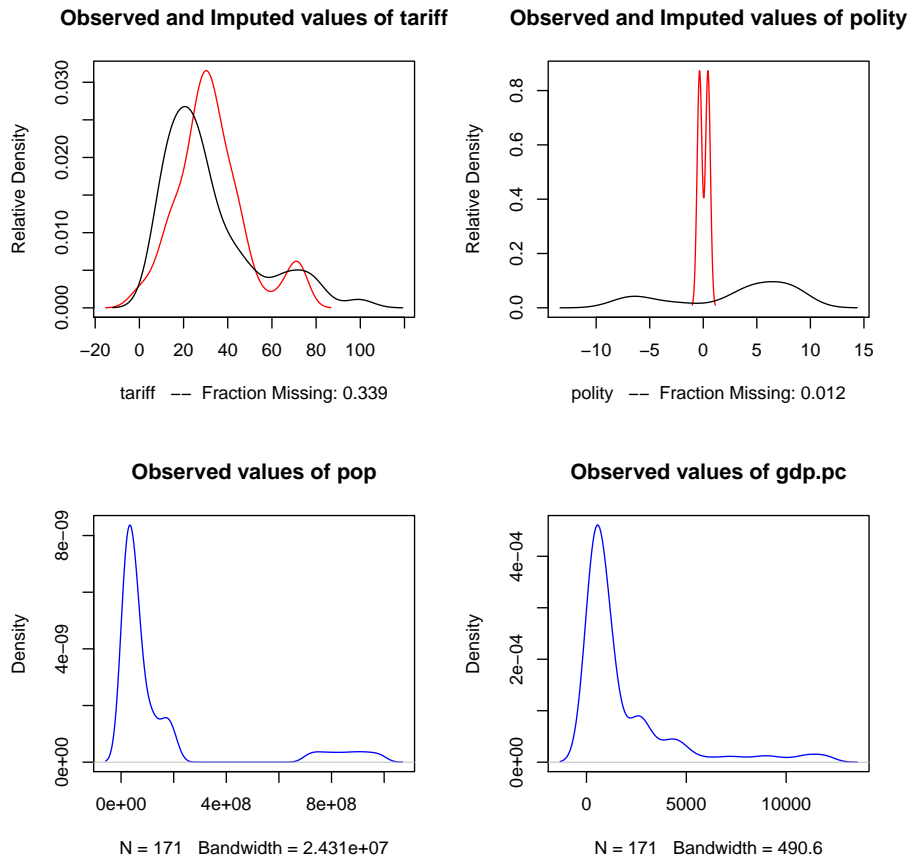


Figure 7: The output of the `plot` method as applied to output from `amelia`. In the upper panels, the distribution of mean imputations (in red) is overlaid on the distribution of observed values (in black) for each variable. In the lower panels, there are no missing values and the distribution of observed values is simply plotted (in blue). Note that now imputed tariff rates are very similar to observed tariff rates, but the imputation of the Polity score are quite different. This is plausible if different types of regimes tend to be missing at different rates.

create this comparison, and if it existed we would no longer need the imputations or care about their accuracy. However, a natural question the applied researcher will often ask is how accurate are these imputed values?

Overimputing involves sequentially treating each of the *observed* values as if they had actually been missing. For each observed value in turn we then generate several hundred imputed values of that observed value, *as if it had been missing*. While $m = 5$ imputations are sufficient for most analysis models, this large number of imputations allows us to construct a confidence interval of what the imputed value would have been, had any of the observed data been missing. We can then graphically inspect whether our observed data tends to fall within the region where it would have been imputed had it been missing.

For example, we can run the overimputation diagnostic on our data by running

```
> overimpute(a.out, var = "tariff")
```

Our overimputation diagnostic, shown in Figure 8, runs this procedure through all of the observed values for a user selected variable. We can graph the estimates of each observation against the true values of the observation. On this graph, a $y = x$ line indicates the line of perfect agreement; that is, if the imputation model was a perfect predictor of the true value, all the imputations would fall on this line. For each observation, Amelia also plots 90% confidence intervals that allows the user to visually inspect the behavior of the imputation model. By checking how many of the confidence intervals cover the $y = x$ line, we can tell how often the imputation model can confidently predict the true value of the observation.

Occasionally, the overimputation can display unintuitive results. For example, different observations may have different numbers of observed covariates. If covariates that are useful to the prediction are themselves missing, then the confidence interval for this observation will be much larger. In the extreme, there may be observations where the observed value we are trying to overimpute is *the only* observed value in that observation, and thus there is nothing left to impute that observation with when we pretend that it is missing, other than the mean and variance of that variable. In these cases, we should correctly expect the confidence interval to be very large.

An example of this graph is shown in figure 9. In this simulated bivariate dataset, one variable is overimputed and the results displayed. The second variable is either observed, in which case the confidence intervals are very small and the imputations (yellow) are very accurate, or the second variable is missing in which case this variable is being imputed simply from the mean and variance parameters, and the imputations (red) have a very large and encompassing spread. The circles represent the mean of all the imputations for that value. As the amount of missing information in a particular pattern of missingness increases, we expect the width of the confidence interval to increase. The color of the confidence interval reflects the percent of covariates observed in that pattern of missingness, as reflected in the legend at the bottom.

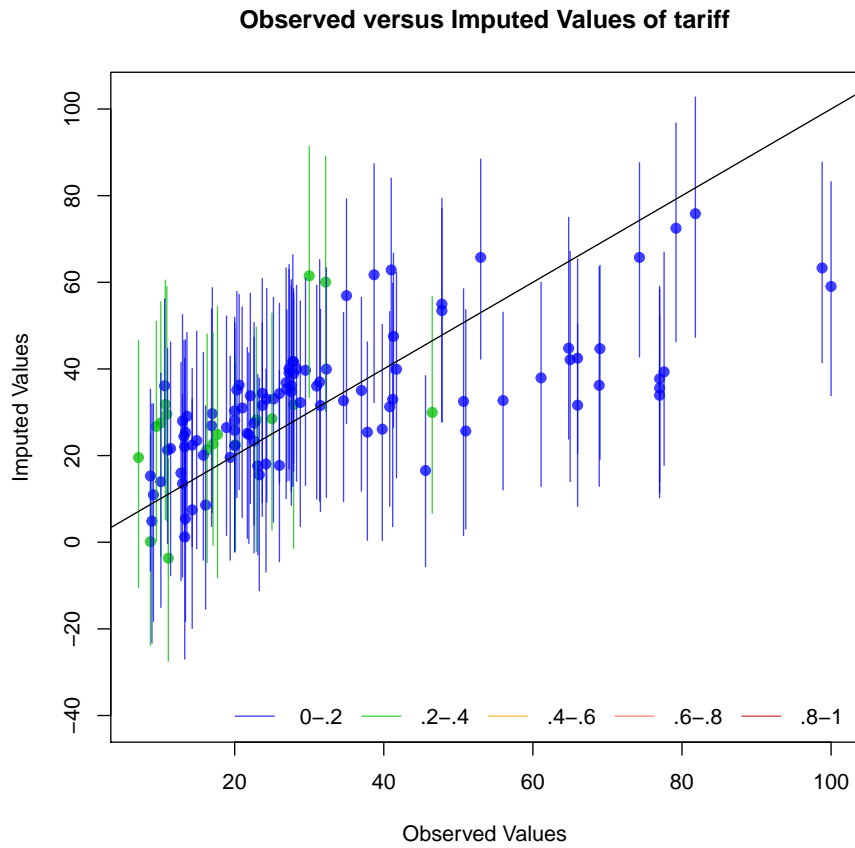


Figure 8: An example of the overimputation diagnostic graph. Here ninety percent confidence intervals are constructed that detail where an observed value would have been imputed had it been missing from the dataset, given the imputation model. The dots represent the mean imputation. Around ninety percent of these confidence intervals contain the $y = x$ line, which means that the true observed value falls within this range. The color of the line (as coded in the legend) represents the fraction of missing observations in the pattern of missingness for that observation.

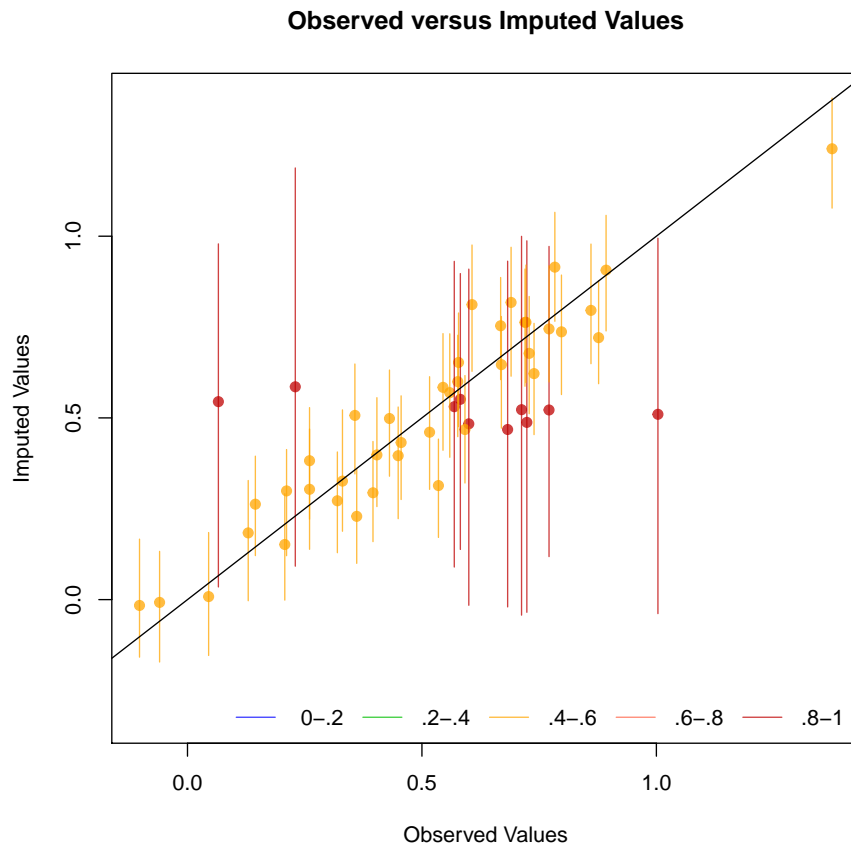


Figure 9: Another example of the overimpute diagnostic graph. Note that the red lines are those observations that have fewer covariates observed and have a higher variance across the imputed values.

4.8.3 Overdispersed Starting Values

If the data given to Amelia has a poorly behaved likelihood, the EM algorithm can have problems finding a global maximum of the likelihood surface and starting values can begin to effect imputations. Because the EM algorithm is deterministic, the point in the parameter space where you start it can impact where it ends, though this is irrelevant when the likelihood has only one mode. However, if the starting values of an EM chain are close to a local maximum, the algorithm may find this maximum, unaware that there is a global maximum farther away. To make sure that our imputations do not depend on our starting values, a good test is to run the EM algorithm from multiple, dispersed starting values and check their convergence. In a well behaved likelihood, we will see all of these chains converging to the same value, and reasonably conclude that this is the likely global maximum. On the other hand, we might see our EM chain converging to multiple locations. The algorithm may also wander around portions of the parameter space that are not fully identified, such as a ridge of equal likelihood, as would happen for example, if the same variable were accidentally included in the imputation model twice.

Amelia includes a diagnostic to run the EM chain from multiple starting values that are overdispersed from the estimated maximum. The overdispersion diagnostic will display a graph of the paths of each chain. Since these chains move through spaces that are in an extremely high number of dimensions and can not be graphically displayed, the diagnostic reduces the dimensionality of the EM paths by showing the paths relative to the largest principle components of the final mode(s) that are reached. Users can choose between graphing the movement over the two largest principal components, or more simply the largest dimension with time (iteration number) on the x -axis. The number of EM chains can also be adjusted. Once the diagnostic draws the graph, the user can visually inspect the results to check that all chains convergence to the same point.

For our original model, this is a simple call to `disperse`:

```
> disperse(a.out, dims = 1, m = 5)
> disperse(a.out, dims = 2, m = 5)
```

where `m` designates the number of places to start EM chains from and `dims` are the number of dimensions of the principal components to show.

In one dimension, the diagnostic plots movement of the chain on the y -axis and time, in the form of the iteration number, on the x -axis. Figures 10 show two examples of these plots. The first shows a well behaved likelihood, as the starting values all converge to the same point. The black horizontal line is the point where Amelia converges when it uses the default method for choosing the starting values. The diagnostic takes the end point of this chain as the possible maximum and disperses the starting values away from it to see if the chain will ever finish at another mode.

4.8.4 Time-series plots

As discussed above, information about time trends and fixed effects can help produce better imputations. One way to check the plausibility of our imputation model is

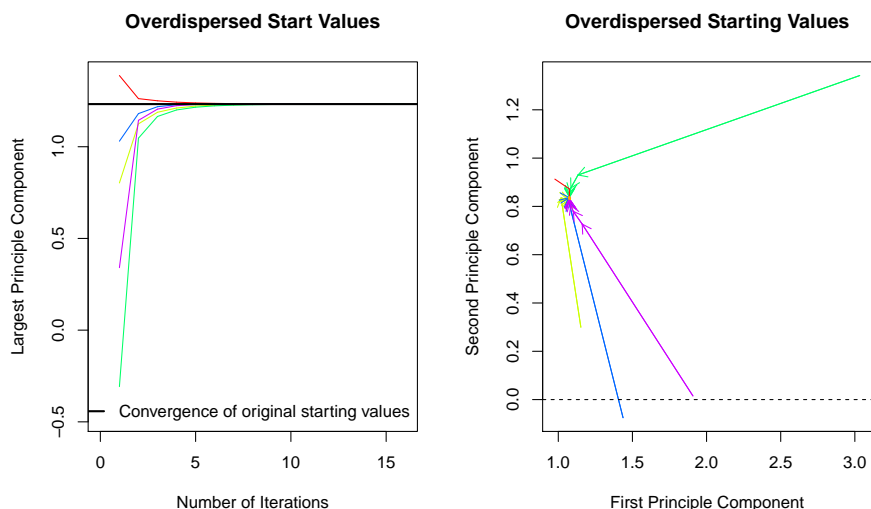


Figure 10: A plot from the overdispersion diagnostic where all EM chains are converging to the same mode, regardless of starting value. On the left, the y -axis represents movement in the (very high dimensional) parameter space, and the x -axis represents the iteration number of the chain. On the right, we visualize the parameter space in two dimensions using the first two principal components of the end points of the EM chains. The iteration number is no longer represented on the y -axis, although the distance between iterations is marked by the distance between arrowheads on each chain.

to see how it predicts missing values in a time series. If the imputations for the Malaysian tariff rate were drastically higher in 1990 than the observed years of 1989 or 1991, we might worry that there is a problem in our imputation model. Checking these time series is easy to do with the `tscsPlot` command. Simply choose the variable (with the `var` argument) and the cross-section (with the `cs` argument) to plot the observed time-series along with distributions of the imputed values for each missing time period. For instance, we can run

```
> tscsPlot(a.out.time, cs = "Malaysia", main = "Malaysia (with time settings)",
+         var = "tariff", ylim = c(-10, 60))
```

to get the plot in figure 11. Here, the black point are observed tariff rates for Malaysia from 1980 to 2000. The red points are the mean imputation for each of the missing values, along with their 95% confidence bands. We draw these bands by imputing each of missing values 100 times to get the imputation distribution for that observation.

to get the plot in figure 11. Here, the black point are observed tariff rates for Malaysia from 1980 to 2000. The red points are the mean imputation for each of the missing values, along with their 95% confidence bands. We draw these bands by imputing each of missing values 100 times to get the imputation distribution for that observation.

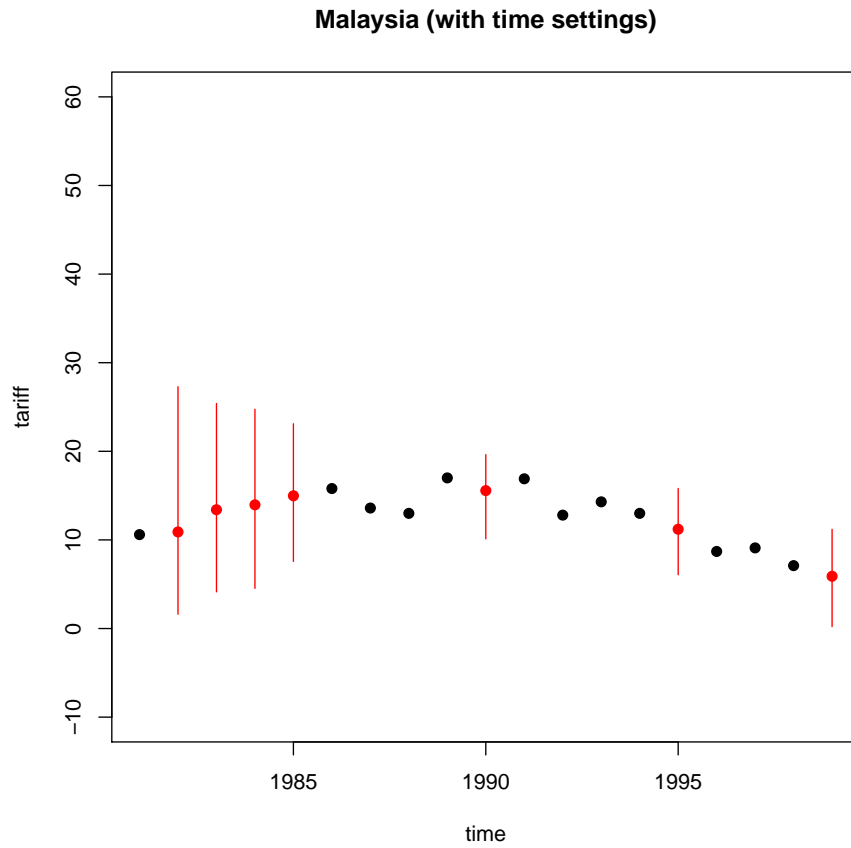


Figure 11: Tariff rates in Malaysia, 1980-2000. An example of the `tscsPlot` function, the black points are observed values of the time series and the red points are the mean of the imputation distributions. The red lines represent the 95% confidence bands of the imputation distribution.

In figure 11, we can see that the imputed 1990 tariff rate is quite in line with the values around it. Notice also that values toward the beginning and end of the time series have higher imputation variance. This occurs because the fit of the polynomials of time in the imputation model have higher variance at the beginning and end of the time series. This is intuitive because these points have fewer neighbors from which to draw predictive power.

A word of caution is in order. As with comparing the histograms of imputed and observed values, there could be reasons that the missing values are systematically different than the observed time series. For instance, if there had been a major financial crisis in Malaysia in 1990 which caused the government to close off trade, then we would expect that the missing tariff rates should be quite different than the observed time series. If we have this information in our imputation model, we might expect to see out-of-line imputations in these time-series plots. If, on the other hand, we did not have this information, we might see “good” time-series plots that fail to point out this violation of the MAR assumption. Our imputation model would produce poor estimates of the missing values since it would be unaware that both the missingness and the true unobserved tariff rate depend on another variable. Hence, the `tscsPlot` is useful for finding obvious problems in imputation model and comparing the efficiency of various imputation models, but it cannot speak to the untestable assumption of MAR.

4.8.5 Missingness maps

One useful tool for exploring the missingness in a dataset is a *missingness map*. This is a map that visualizes the dataset a grid and colors the grid by missingness status. The column of the grid are the variables and the rows are the observations, as in any spreadsheet program. This tool allows for a quick summary of the patterns of missingness in the data.

If we simply call the `missmap` function on our output from `amelia`,

```
> missmap(a.out)
```

we get the plot in figure 12. The `missmap` function arrange the columns so that the variables are in decreasing order of missingness from left to right. If the `cs` argument was set in the `amelia` function, the labels for the rows will indicate where each of the cross-sections begin.

In figure 12, it is clear that the tariff rate is the variable most missing in the data and it tends to be missing in blocks of a few observations. Gross international reserves (`intresmi`) and financial openness (`fivop`), on the other hand, are missing mostly at the end of each cross-section. This suggests *missingness by merging*, when variables with different temporal coverages are merged to make one dataset. Sometimes this kind of missingness is an artifact of the date at which the data was merged and researchers can resolve it by finding updated versions of the relevant variables.

The missingness map is an important tool for understanding the patterns of missingness in the data and can often indicate potential ways to improve the imputation model or data collection process.

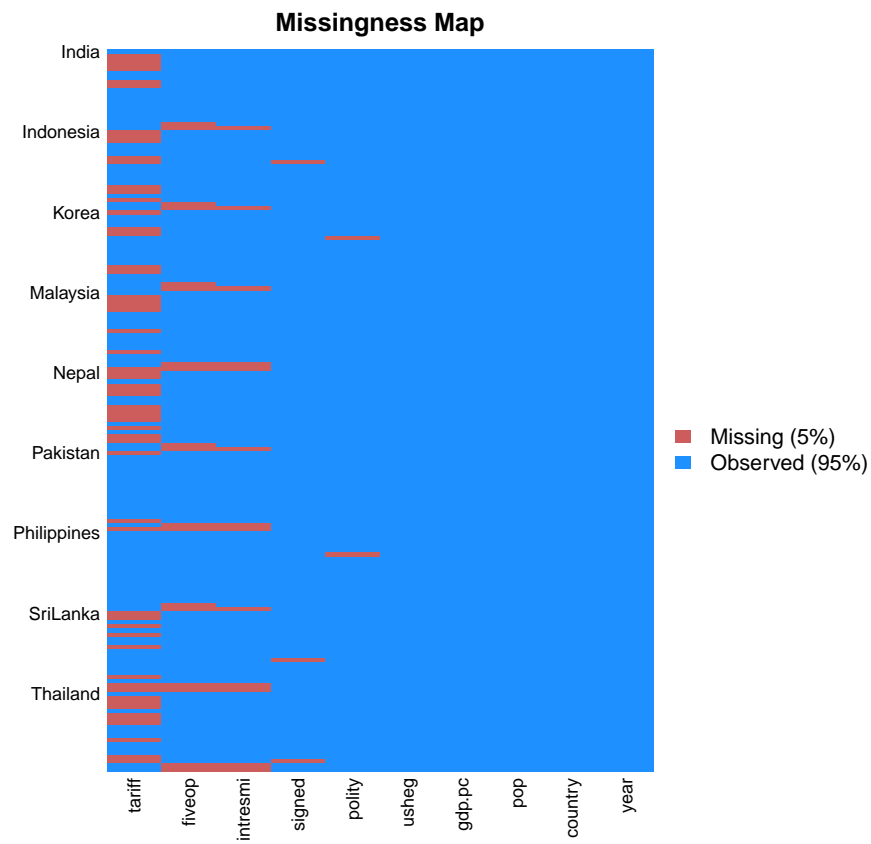


Figure 12: Missingness map of the freetrade data. Missing values are in tan and observed values are in red.

4.9 Post-imputation Transformations

In many cases, it is useful to create transformations of the imputed variables for use in further analysis. For instance, one may want to create an interaction between two variables or perform a log-transformation on the imputed data. To do this, *Amelia* includes a `transform` function for *amelia* output that adds or overwrites variables in each of the imputed datasets. For instance, if we wanted to create a log-transformation of the `gdp.pc` variable, we could use the following command:

```
> a.out <- transform(a.out, lgdp = log(gdp.pc))
> head(a.out$imputations[[1]][,c("country", "year", "gdp.pc", "lgdp")])
```

```
  country year gdp.pc  lgdp
1 SriLanka 1981  461.0 6.133
2 SriLanka 1982  473.8 6.161
3 SriLanka 1983  489.2 6.193
4 SriLanka 1984  508.2 6.231
5 SriLanka 1985  525.6 6.264
6 SriLanka 1986  538.9 6.290
```

To create an interaction between two variables, we could simply use:

```
> a.out <- transform(a.out, pol_gdp = polity * gdp.pc)
```

Each transformation is recorded and the `summary` command prints out each transformation that has been performed:

```
> summary(a.out)
```

Amelia output with 5 imputed datasets.

Return code: 1

Message: Normal EM convergence.

Chain Lengths:

```
-----
Imputation 1: 14
Imputation 2: 15
Imputation 3: 9
Imputation 4: 14
Imputation 5: 10
```

Rows after Listwise Deletion: 96

Rows after Imputation: 171

Patterns of missingness in the data: 8

Fraction Missing for original variables:

```
-----
```

Fraction Missing

```

year          0.00000
country       0.00000
tariff        0.33918
polity        0.01170
pop           0.00000
gdp.pc        0.00000
intresmi      0.07602
signed        0.01754
fiveop        0.10526
usheg         0.00000
lgdp          0.00000
pol_gdp       0.01170

```

Post-imputation transformed variables:

```

-----
                Transformations
lgdp =          log(gdp.pc)
pol_gdp = polity * gdp.pc

```

Note the updated output is almost exactly the same as the fresh `amelia` output. You can pass the transformed output back to `amelia` and it will add imputations and update these imputations with the transformations you have performed.

4.10 Analysis Models

Imputation is most often a data processing step as opposed to a final model in of itself. To this end, it is easy to pass output from `amelia` to other functions. The easiest and most integrated way to run an analysis model is to pass the output to the `zelig` function from the `Zelig` package. For example, in Milner and Kubota (2005), the dependent variable was tariff rates. We can replicate table 5.1 from their analysis with the original data simply by running

```

> require(Zelig)
> z5 <- zls$new()
> z5$zelig(tariff ~ polity + pop + gdp.pc + year + country, data = freetrade)

> z5

```

Model:

Call:

```

z5$zelig(formula = tariff ~ polity + pop + gdp.pc + year + country,
          data = freetrade)

```

Residuals:

```

      Min      1Q  Median      3Q      Max

```


-30.764 -3.259 0.087 2.598 18.310

Coefficients:

	Estimate	Std. Error	t value	Pr(> t)
(Intercept)	1.97e+03	4.02e+02	4.91	3.6e-06
polity	-1.37e-01	1.82e-01	-0.75	0.45
pop	-2.02e-07	2.54e-08	-7.95	3.2e-12
gdp.pc	6.10e-04	7.44e-04	0.82	0.41
year	-8.71e-01	2.08e-01	-4.18	6.4e-05
countryIndonesia	-1.82e+02	1.86e+01	-9.82	3.0e-16
countryKorea	-2.20e+02	2.08e+01	-10.61	< 2e-16
countryMalaysia	-2.25e+02	2.17e+01	-10.34	< 2e-16
countryNepal	-2.16e+02	2.25e+01	-9.63	7.7e-16
countryPakistan	-1.55e+02	1.98e+01	-7.84	5.6e-12
countryPhilippines	-2.04e+02	2.09e+01	-9.77	3.7e-16
countrySriLanka	-2.09e+02	2.21e+01	-9.46	1.8e-15
countryThailand	-1.96e+02	2.10e+01	-9.36	3.0e-15

Residual standard error: 6.22 on 98 degrees of freedom
(60 observations deleted due to missingness)

Multiple R-squared: 0.925, Adjusted R-squared: 0.915

F-statistic: 100 on 12 and 98 DF, p-value: <2e-16

Statistical Warning: The GIM test suggests this model is misspecified

(based on comparisons between classical and robust SE's; see <http://j.mp/GIMtest>)

We suggest you run diagnostics to ascertain the cause, respecify the model and run it again.

Next step: Use 'setx' method

Running the same model with imputed data is almost identical. Simply replace the original data set with the amelia output:

```
> z5 <- zls$new()
```

```
> z5$zelig(tariff ~ polity + pop + gdp.pc + year + country, data = a.out)
```

```
> z5
```

Model: Combined Imputations

	Estimate	Std. Error	z value	Pr(> z)
(Intercept)	2.6e+03	6.0e+02	4.3	2e-05
polity	3.3e-01	3.0e-01	1.1	0.278
pop	-1.1e-07	4.3e-08	-2.5	0.012
gdp.pc	-2.3e-04	1.3e-03	-0.2	0.855
year	-1.2e+00	3.1e-01	-3.9	9e-05
countryIndonesia	-1.0e+02	3.1e+01	-3.3	9e-04

countryKorea	-1.3e+02	3.6e+01	-3.5	5e-04
countryMalaysia	-1.3e+02	3.8e+01	-3.5	6e-04
countryNepal	-1.2e+02	3.8e+01	-3.2	0.001
countryPakistan	-8.0e+01	3.4e+01	-2.4	0.016
countryPhilippines	-1.2e+02	3.6e+01	-3.4	7e-04
countrySriLanka	-1.2e+02	3.7e+01	-3.3	0.001
countryThailand	-1.1e+02	3.5e+01	-3.3	0.001

For results from individual imputed datasets, use `summary(x, subset = i:j)`
 Next step: Use 'setx' method

Zelig is one way to run analysis models on imputed data, but certainly not the only way. The `imputations` list in the `amelia` output contains each of the imputed datasets. Thus, users could simply program a loop over the number of imputations and run the analysis model on each imputed dataset and combine the results using the rules described in King et al. (2001) and Schafer (1997). Furthermore, users can easily export their imputations using the `write.amelia` function as described in 4.2.1 and use statistical packages other than R for the analysis model.

Amelia also has the ability combine quantities of interest from arbitrary models using the `mi.meld` function. This command takes in a matrix with columns for the quantity and its standard error in each of the imputed datasets. It then uses the standard rules for combining multiple imputations to create an overall estimated quantity.

```
> b.out<-NULL
> se.out<-NULL
> for(i in 1:a.out$m) {
+   ols.out <- lm(tariff ~ polity + pop + gdp.pc, data = a.out$imputations[[i]])
+   b.out <- rbind(b.out, ols.out$coef)
+   se.out <- rbind(se.out, coef(summary(ols.out))[,2])
+ }
> combined.results <- mi.meld(q = b.out, se = se.out)
> combined.results
```

```
$q.mi
      (Intercept)  polity      pop  gdp.pc
[1,]          31.86 -0.01699 3.345e-08 -0.002591
```

```
$se.mi
      (Intercept)  polity      pop  gdp.pc
[1,]          2.338 0.2699 6.394e-09 0.0006314
```

In addition to the resources available in R, users can draw on Stata to implement their analysis models. As of version 11, Stata has built-in handling of multiply imputed datasets. In order to utilize this functionality, simply export the “stacked” imputations using the `write.amelia` function:

```
> write.amelia(a.out, separate = FALSE, file.stem = "outdata", format = "dta")
```

Once this stacked dataset is open in Stata, you must tell Stata that it is an imputed dataset using the `mi import flong` command:

```
mi import flong, m(imp) id(year country) imp(tariff-usheg)
```

The command takes a few options: `m` designates the imputation variable (set with `impvar` in `write.amelia`), `id` sets the identifying variables, and `imp` sets the variables that were imputed (or included in the imputation). The `tariff-usheg` indicates that Stata should treat the range of variables between `tariff` and `usheg` as imputed. Once we have set the dataset as imputed, we can use the built-in `mi` commands to analyze the data:

```
. mi estimate: reg tariff polity pop gdp_pc
```

```
Multiple-imputation estimates      Imputations      =           5
Linear regression                  Number of obs    =          171
                                   Average RVI      =          1.4114
                                   Complete DF     =           167
DF adjustment: Small sample       DF: min         =          10.36
                                   avg             =          18.81
                                   max             =          37.62
Model F test: Equal FMI           F( 2, 10.4)     =          15.50
Within VCE type: OLS              Prob > F        =          0.0008
```

tariff	Coef.	Std. Err.	t	P> t	[95% Conf. Interval]	
polity	-.2058115	.3911049	-0.53	0.610	-1.072968	.6613452
pop	3.21e-08	8.72e-09	3.68	0.004	1.27e-08	5.14e-08
gdp_pc	-.0027561	.000644	-4.28	0.000	-.0040602	-.0014519
_cons	32.70461	2.660091	12.29	0.000	27.08917	38.32005

4.11 The `amelia` class

The output from the `amelia` function is an instance of the S3 class “`amelia`.” Instances of the `amelia` class contain much more than simply the imputed datasets. The `mu` object of the class contains the posterior draws of the means of the complete data. The `covMatrices` contains the posterior draws of the covariance matrices of the complete data. Note that these correspond to the variables as they are sent to the EM algorithm. Namely, they refer to the variables after being transformed, centered and scaled.

The `iterHist` object is a list of `m` 3-column matrices. Each row of the matrices corresponds to an iteration of the EM algorithm. The first column indicates how many parameters had yet to converge at that iteration. The second column indicates if the EM algorithm made a step that decreased the number of converged parameters. The third column indicates whether the covariance matrix at this iteration was

singular. Clearly, the last two columns are meant to indicate when the EM algorithm enters a problematic part of the parameter space.

5 AmeliaView Menu Guide

Below is a guide to the AmeliaView menus with references back to the users's guide. The same principles from the user's guide apply to AmeliaView. The only difference is how you interact with the program. Whether you use the GUI or the command line versions, the same underlying code is being called, and so you can read the command line-oriented discussion above even if you intend to use the GUI.

5.1 Loading AmeliaView

The easiest way to load AmeliaView is to open an R session and type the following two commands:

```
> library(Amelia)
> AmeliaView()
```

This will bring up the AmeliaView window on any platform.

On the Windows operating system, there is an alternative way to start AmeliaView from the Desktop. See section 3.2 for a guide on how to install this version. Once installed, there should be a Desktop icon for AmeliaView. Simply double-click this icon and the AmeliaView window should appear. If, for some reason, this approach does not work, simply open an R session and use the approach above.

5.2 Loading a data set into AmeliaView

AmeliaView load with a welcome screen (Figure 13) that has buttons which can load a data in many of the common formats. Each of these will bring up a window for choosing your dataset. Note that these buttons are only a subset of the possible ways to load data in AmeliaView. Under the **F**ile menu (shown in Figure 14), you will find more options, including the datasets included in the package (**africa** and **freetrade**). You will also find import commands for Comma-Separated Values (.CSV), Tab-Delimited Text (.TXT), Stata v.5-10 (.DTA), SPSS (.DAT), and SAS Transport (.XPORT). Note that when using a CSV file, Amelia assumes that your file has a header (that is, a row at the top of the data indicating the variable names).

You can also load data from an RData file. If the RData file contains more than one `data.frame`, a pop-up window will ask to you find the dataset you would like to load. In the file menu, you can also change the underlying working directory. This is where AmeliaView will look for data by default and where it will save imputed datasets.

5.3 Variable dashboard

Once a dataset is loaded, AmeliaView will show the variable dashboard (Figure 15). In this mode, you will see a table of variables, with the current options for each of them shown, along with a few summary statistics. You can reorder this table by any of these columns by clicking on the column headings. This might be helpful to, say, order the variables by mean or amount of missingness.



Figure 13: AmeliaView welcome screen.

You can set options for individual variables by the right-click context menu (Figure 16) or through the Variables menu. For instance, clicking “Set as Time-Series Variable” will set the currently selected variable in the dashboard as the time-series variable. Certain options are disabled until other options are enabled. For instance, you cannot add a lagged variable to the imputation until you have set the time-series variable. Note that any **factor** in the data is marked as a ID variable by default, since a **factor** cannot be included in the imputation without being set as an ID variable, a nominal variable, or the cross-section variable. If there is a **factor** that fails to meet one of these conditions, a red flag will appear next to the variable name.

1. **Set as Time-Series Variable** - Sets the currently selected variable to the time-series variable. Disabled when more than one variable is selected. Once this is set, you can add lags and leads and add splines of time. The time-series variable will have a clock icon next to it.
2. **Set as Cross-Section Variable** - Sets the currently selected variable to the cross-section variable. Disabled when more than one variable is selected. Once this is set, you can interact the splines of time with the cross-section. The cross-section variable will have a person icon next to it.
3. **Unset as Time-Series Variable** - Removes the time-series status of the variable. This will remove any lags, leads, or splines of time.
4. **Unset as Cross-Section Variable** - Removes the cross-section status of

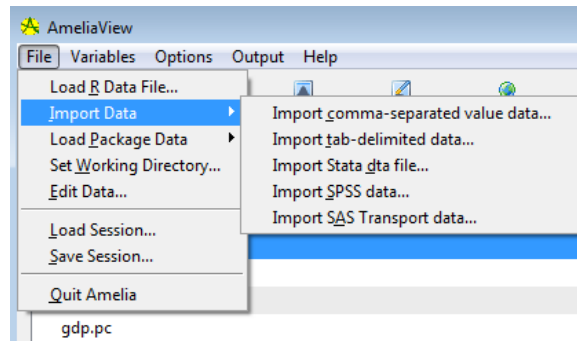


Figure 14: AmeliaViewFile and import menu.

the variable. This will remove any intersection of the splines of time and the cross-section.

5. **Add Lag/Lead** - Adds versions of the selected variables either lagged back (“lag”) or forward (“lead”). See 4.6.1 above.
6. **Remove Lag/Lead** - Removes any lags or leads on the selected variables.
7. **Plot Histogram of Selected** - Plots a histogram of the selected variables. This command will attempt to put all of the histograms on one page, but if more than nine histograms are requested, they will appear on multiple pages.
8. **Add Transformation...** - Adds a transformation setting for the selected variables. Note that each variable can only have one transformation and the time-series and cross-section variables cannot be transformed.
9. **Remove Transformation** - Removes any transformation for the selected variables.
10. **Add or Edit Bounds** - Opens a dialog box to set logical bounds for the selected variable.

5.4 Amelia Options

The Variable menu and the variable dashboard are the place to set variable-level options, but global options are set in the Options menu.

1. **Splines of Time with...** - This option, if activated, will have Amelia use flexible trends of time with the specified number of knots in the imputation. The higher the number of knots the greater the variation in the trend structure, yet it will take more degrees of freedom to estimate. For more information see 4.6 above.
2. **Interact with Cross-Section?** - Include and interaction of the cross-section with the time trends. This interaction is way of allowing the trend of time to vary across cases as well. Using a 0-level spline of time and interacting with the cross section is the equivalent of using a fixed effects. For more information see 4.6 above.

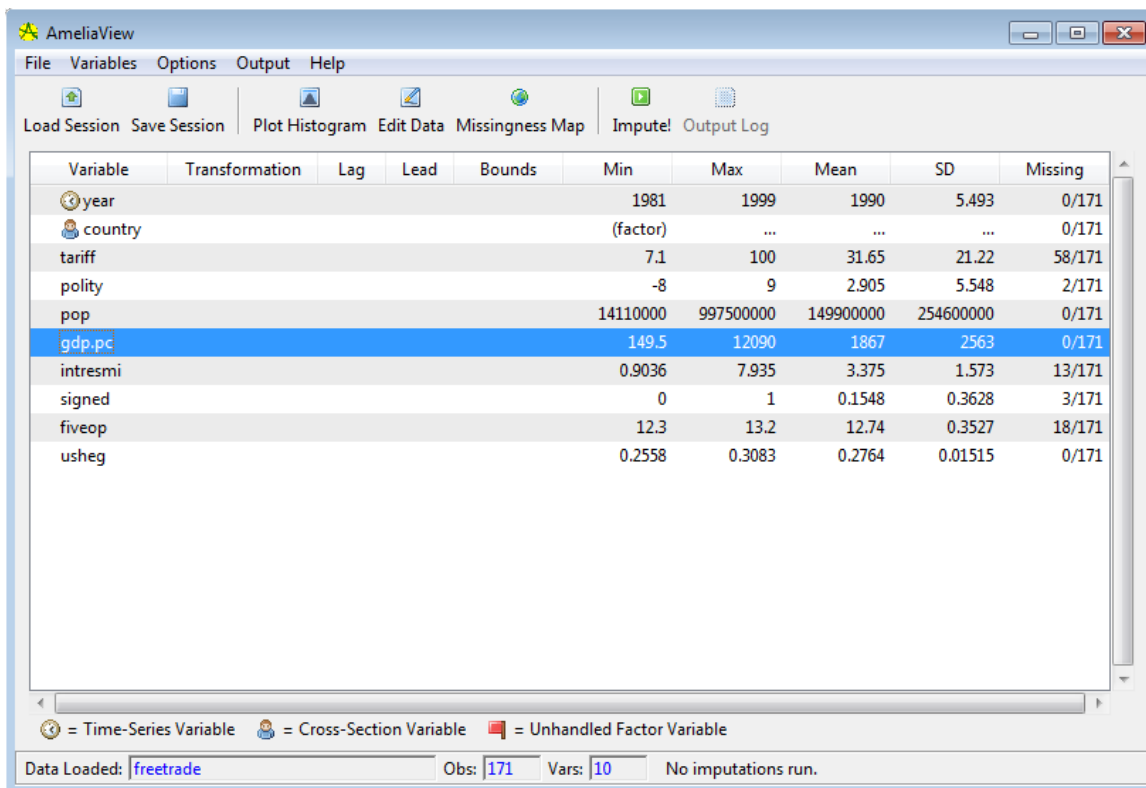


Figure 15: Main variable dashboard in AmeliaView.

3. **Add Observational Priors...** - Brings a dialog window to set prior beliefs about ranges for individual missing observations. For more information about observational priors, see 4.7.2.
4. **Numerical Options** - Brings a dialog window to set the tolerance of the EM algorithm, the seed of the random number generator, the ridge prior for numerical stability, and the maximum number of redraws for the logical bounds.
5. **Draw Missingness Map** - Draws a missingness map. See 4.8.5 for more details on missingness maps.
6. **Output File Options** - Bring a dialog to set the stub of the prefix of the imputed data files and the number of imputations. If you set the prefix to “mydata”, your output files will be `mydata1.csv`, `mydata2.csv`... etc.
7. **Output File Type** - Sets the format of imputed data. If you would like to not save any output data sets (if you wanted, for instance, to simply look at diagnostics), set this option to “(no save).” Currently, you can save the output data as: Comma Separated Values (.CSV), Tab Delimited Text (.TXT), Stata (.DTA), R save object (.RData), or to hold it in R memory. This last option will only work if you have called AmeliaView from an R session and want to return to the R command line to work with the output. Its name in R workspace will be the file prefix. The stacked version of the Stata output will work with their built-in `mi` tools.

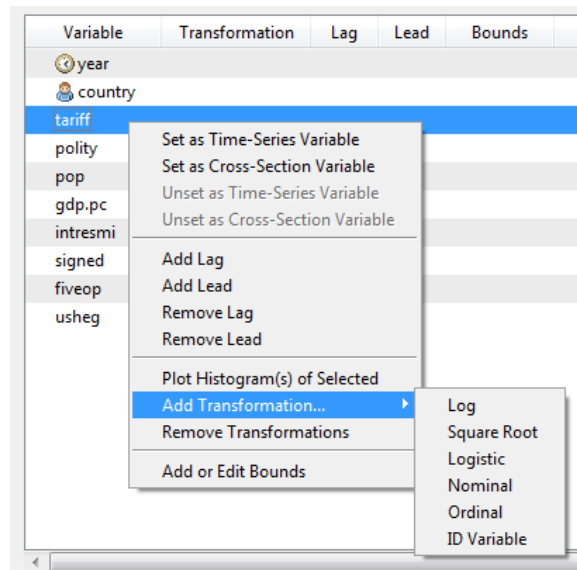


Figure 16: Variable options via right-click menu on the variable dashboard.

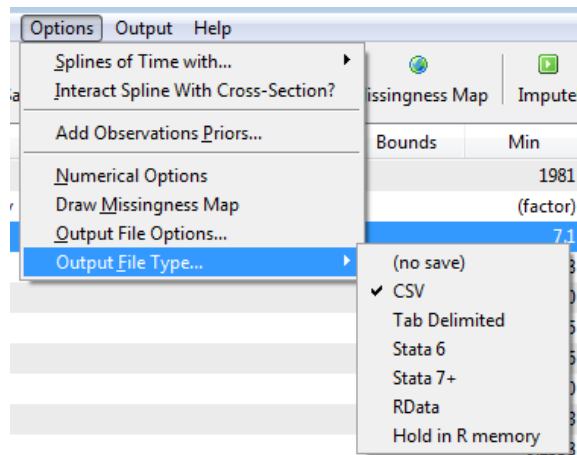


Figure 17: Options menu.

5.4.1 Numerical Options

1. **Seed** - Sets the seed for the random number generator used by Amelia. Useful if you need to have the same output twice.
2. **Tolerance** - Adjust the level of tolerance that Amelia uses to check convergence of the EM algorithm. In very large datasets, if your imputation chains run a long time without converging, increasing the tolerance will allow a lower threshold to judge convergence and end chains after fewer iterations.
3. **Empirical Prior** - A prior that adds observations to your data in order to shrink the covariances. A useful place to start is around 0.5% of the total number of observations in the dataset (see 4.7.1).
4. **Maximum Resample for Bounds** - Amelia fits logical bounds by rejecting any draws that do not fall within the bounds. This value sets the number of

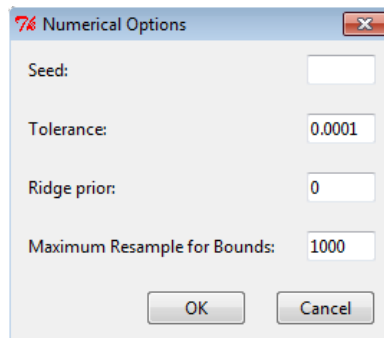


Figure 18: Options menu.

times Amelia should attempt to resample to fit the bounds before setting the imputation to the bound.

5.4.2 Add Distribution Prior

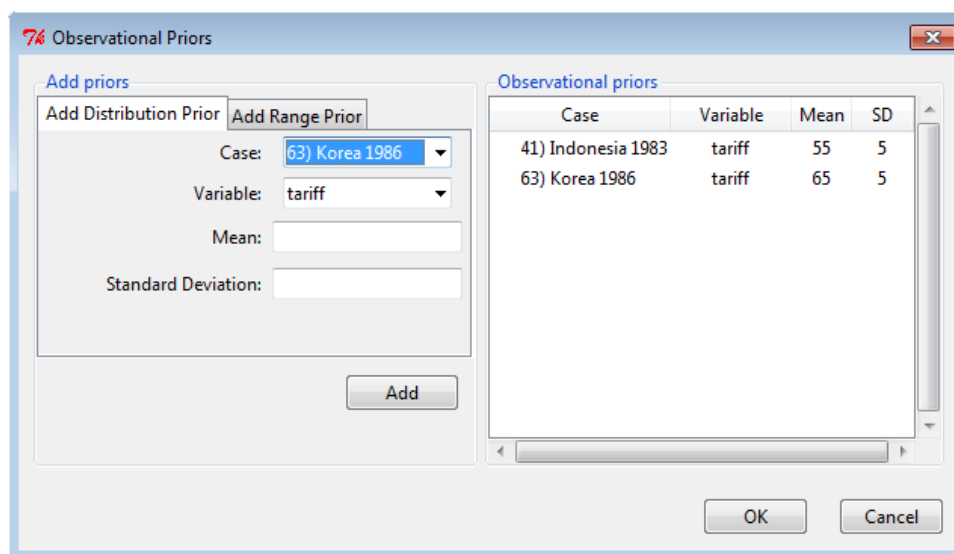


Figure 19: Detail for Add Distributional Prior dialog

1. **Current Priors** - A table of current priors in distributional form, with the variable and case name. You can remove priors by selecting them and using the right-click context menu.
2. **Case** - Select the case name or number you wish to set the prior about. You can also choose to make the prior for the entire variable, which will set the prior for any missing cell in that variable. The case names are generated from the row name of the observation, the value of the cross-section variable of the observation and the value of the time series variable of the observation.
3. **Variable** - The variable associated with the prior you would like specify. The list provided only shows the missing variables for the currently selected observation.

4. **Mean** - The mean value of the prior. The textbox will not accept letters or out of place punctuation.
5. **Standard Deviation** - The standard deviation of the prior. The textbox will only accept positive non-zero values.

5.4.3 Add Range Prior

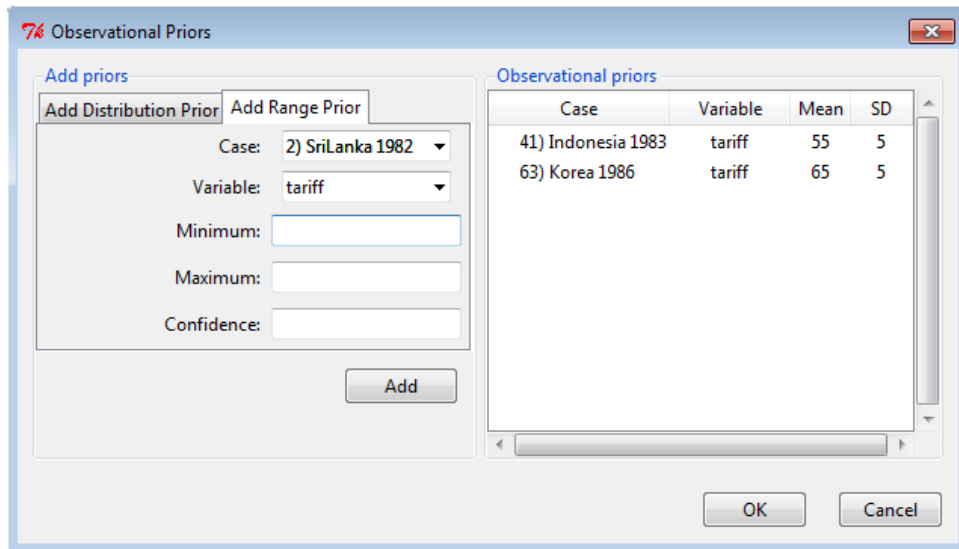


Figure 20: Detail for Add Range Prior dialog.

1. **Case** - Select the case name or number you wish to set the prior about. You can also choose to make the prior for the entire variable, which will set the prior for any missing cell in that variable. The case names are generated from the row name of the observation, the value of the cross-section variable of the observation and the value of the time series variable of the observation.
2. **Variable** - The variable associated with the prior you would like specify. The list provided only shows the missing variables for the currently selected observation.
3. **Minimum** - The minimum value of the prior. The textbox will not accept letters or out of place punctuation.
4. **Maximum** - The maximum value of the prior. The textbox will not accept letters or out of place punctuation.
5. **Confidence** - The confidence level of the prior. This should be between 0 and 1, non-inclusive. This value represents how certain your priors are. This value cannot be 1, even if you are absolutely certain of a give range. This is used to convert the range into an appropriate distributional prior.

```

7% Output Log
File
amelia(x = getAmelia("amelia.data"), m = 5, idvars = NULL, ts = "year",
cs = "country", priors = NULL, lags = NULL, empri = 0, intercs = FALSE,
leads = NULL, splinetime = NULL, logs = NULL, sqrts = NULL,
lgstc = NULL, ords = NULL, noms = NULL, bounds = NULL, max.resample = 1000,
tolerance = 1e-04)

-- Imputation 1 --
 1  2  3  4  5  6  7  8  9 10 11 12 13 14 15

-- Imputation 2 --
 1  2  3  4  5  6  7  8  9 10 11 12 13 14 15 16 17 18

-- Imputation 3 --
 1  2  3  4  5  6  7  8  9 10 11 12 13 14 15

-- Imputation 4 --
 1  2  3  4  5  6  7  8  9 10 11 12 13 14 15 16 17

-- Imputation 5 --
 1  2  3  4  5  6  7  8  9 10 11 12 13 14 15

Normal EM convergence.
Amelia has run successfully.

```

Figure 21: Output log showing Amelia output for a successful imputation.

5.5 Imputing and checking diagnostics

Once you have set all the relevant options, you can impute your data by clicking the “Impute!” button in the toolbar. In the bottom right corner of the window, you will see a progress bar that indicates the progress of the imputations. For large datasets this could take some time. Once the imputations are complete, you should see a “Successful Imputation!” message appear where the progress bar was. You can click on this message to open the folder containing the imputed datasets.

If there was an error during the imputation, the output log will pop-up and give you the error message along with some information about how to fix the problem. Once you have fixed the problem, simply click “Impute!” again. Even if there was no error, you may want to view the output log to see how Amelia ran. To do so, simply click the “Show Output Log” button. The log also shows the call to the `amelia` function in R. You can use this code snippet to run the same imputation from the R command line.⁹

5.5.1 Diagnostics Dialog

Upon the successful completion of an imputation, the diagnostics menu will become available. Here you can use all of the diagnostics available at the command-line.

1. **Compare Plots** - This will display the relative densities of the observed (red) and imputed (black) data. The density of the imputed values are the average

⁹You will have to replace the `x` argument in the `amelia` call to the name of you dataset in the R session.

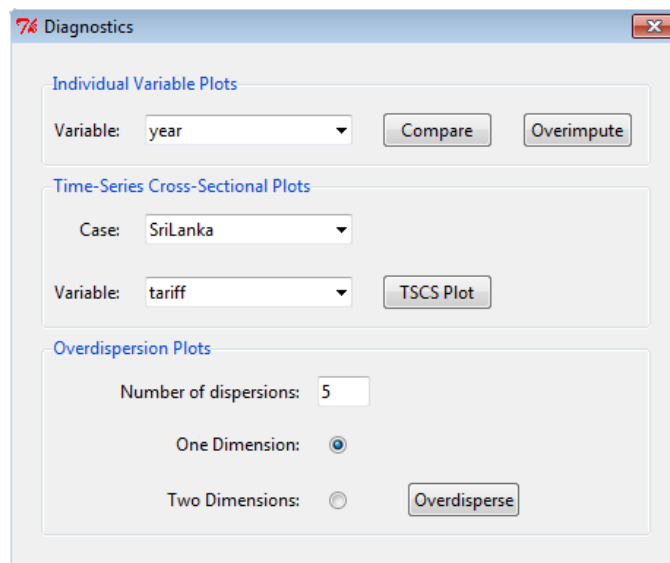


Figure 22: Detail for Diagnostics dialog.

imputations across all of the imputed datasets.

2. **Overimpute** - This will run `Amelia` on the full data with one cell of the chosen variable artificially set to missing and then check the result of that imputation against the truth. The resulting plot will plot average imputations against true values along with 90% confidence intervals. These are plotted over a $y = x$ line for visual inspection of the imputation model.
3. **Number of overdispersions** - When running the overdispersion diagnostic, you need to run the imputation algorithm from several overdispersed starting points in order to get a clear idea of how the chain are converging. Enter the number of imputations here.
4. **Number of dimensions** - The overdispersion diagnostic must reduce the dimensionality of the paths of the imputation algorithm to either one or two dimensions due to graphical restraints.
5. **Overdisperse** - Run overdispersion diagnostic to visually inspect the convergence of the `Amelia` algorithm from multiple start values that are drawn randomly.

5.6 Sessions

It is often useful to save a session of `AmeliaView` to save time if you have impute the same data again. Using the **Save Session** button will do just that, saving all of the current settings (including the original and any imputed data) to an RData file. You can then reload your session, on the same computer or any other, simply by clicking the **Load Session** button and finding the relevant RData file. All of the settings will be restored, including any completed imputations. Thus, if you save

the session after imputing, you can always load up those imputations and view their diagnostics using the sessions feature of AmeliaView.

References

- Abayomi, Kobi, Andrew Gelman and Marc Levy. 2008. “Diagnostics for multivariate imputations.” *Applied Statistics* 57(3):273–291.
- Dempster, Arthur P., N.M. Laird and D.B. Rubin. 1977. “Maximum likelihood estimation from incomplete data via the em algorithm.” *Journal of the Royal Statistical Society B* 39:1–38.
- Honaker, James, Anne Joseph, Gary King, Kenneth Scheve and Nainihal Singh. 1998-2002. “**AMELIA**: A program for missing data.” <http://gking.harvard.edu/amelia>.
- Honaker, James and Gary King. 2010. “What to do about missing values in time series cross-section data.” *American Journal of Political Science* 54(2):561–581. <http://gking.harvard.edu/files/abs/pr-abs.shtml>.
- King, Gary, James Honaker, Anne Joseph and Kenneth Scheve. 2001. “Analyzing incomplete political science data: An alternative algorithm for multiple imputation.” *American Political Science Review* 95(1):49–69. <http://gking.harvard.edu/files/abs/evil-abs.shtml>.
- King, Gary, Michael Tomz and Jason Wittenberg. 2000. “Making the most of statistical analyses: Improving interpretation and presentation.” *American Journal of Political Science* 44(2):341–355. <http://gking.harvard.edu/files/abs/making-abs.shtml>.
- Milner, Helen and Keiko Kubota. 2005. “Why the move to free trade? Democracy and trade policy in the developing countries.” *International Organization* 59(1):107–143.
- Schafer, Joseph L. 1997. *Analysis of incomplete multivariate data*. London: Chapman & Hall.
- Schafer, Joseph L. and Maren K. Olsen. 1998. “Multiple imputation for multivariate missing-data problems: A data analyst’s perspective.” *Multivariate Behavioral Research* 33(4):545–571.